

SEI™

technology

products

research &amp; development

private label

SEI™ ADVANCED CHEMICAL TECHNOLOGY™

Click on the colored squares

environmental, universal, compatible.

1.0 <b>H</b> 1.008												5.0 <b>B</b> 10.81	6.0 <b>C</b> 12.01	07 <b>Cu</b> 63.55
01 <b>Au</b> 197.0	4.0 <b>Be</b> 9.01											04 <b>Pr</b> 140.9	14 <b>Si</b> 28.09	15 <b>P</b> 30.97
11 <b>Na</b> 22.99	12 <b>Mg</b> 24.31	02 <b>Tc</b> 98.0	27 <b>Co</b> 58.93	28 <b>Ni</b> 58.71	29 <b>Cu</b> 63.55	30 <b>Zn</b> 65.38	31 <b>Ga</b> 69.72	32 <b>Ge</b> 72.64						06 <b>Cs</b> 132.9
19 <b>K</b> 39.10	20 <b>Ca</b> 40.08	44 <b>Ru</b> 101.1	45 <b>Rh</b> 102.9	46 <b>Pd</b> 106.4	03 <b>Rd</b> 223.0								05 <b>PI</b> 208.9	51 <b>Sb</b> 121.8

SEI Chemical is a specialty chemical developer, formulator and manufacturer. SEI Chemical currently sells world-class construction, oil and gas, industrial and consumer technologies and products directly to commercial end users as well as through select resellers and distributors.

SEI Chemical manufactures high-end, leading edge, environmentally acceptable products. The line includes anti-stick and concrete curing Graffiti Preventative Additives and Coatings and graffiti removal products, Mold Prevention Additives and Products, Corrosion Preventative Additives and Products, redi-mix concrete truck coatings designed for protection external parts as well as internal parts like mixers, concrete and metal Structure Strengthening Coatings and a complete range of construction chemicals.

SEI™

technology

products

research &amp; development

private label

SEI™ ADVANCED CHEMICAL  
TECHNOLOGY™

Click on the colored squares

1.0 <b>H</b> 1.002			<b>environmental, universal, compatible.</b>						5.0 <b>B</b> 5.002	6.0 <b>C</b> 6.002	07 <b>Cu</b> 07.02
01 <b>Au</b> 01.02	4.0 <b>Be</b> 4.002							04 <b>Pr</b> 04.02	14 <b>Si</b> 14.02	15 <b>P</b> 15.02	
11 <b>Na</b> 11.02	12 <b>Mg</b> 12.02	02 <b>Tc</b> 02.02	27 <b>Co</b> 27.02	28 <b>Ni</b> 28.02	29 <b>Cu</b> 29.02	30 <b>Zn</b> 30.02	31 <b>Ga</b> 31.02	32 <b>Ge</b> 32.02	06 <b>Cs</b> 06.02		
19 <b>K</b> 19.02	9 <b>Ca</b> 19.02	20 <b>Ca</b> 20.02	44 <b>Ru</b> 44.02	45 <b>Rh</b> 45.02	46 <b>Pd</b> 46.02	03 <b>Rd</b> 03.02	48 <b>In</b> 48.02	49 <b>Sn</b> 49.02	05 <b>Pb</b> 05.02	51 <b>Sb</b> 51.02	

SEI Chemical is a specialty chemical developer, formulator and manufacturer. SEI Chemical currently sells world-class construction, oil and gas, industrial and consumer technologies and products directly to commercial end users as well as through select resellers and distributors.

SEI Chemical manufactures high-end, leading edge, environmentally acceptable products. The line includes anti-stick and concrete curing Graffiti Preventative Additives and Coatings and graffiti removal products, Mold Prevention Additives and Products, Corrosion Preventative Additives and Products, redi-mix concrete truck coatings designed for protection external parts as well as internal parts like mixers, concrete and metal Structure Strengthening Coatings and a complete range of construction chemicals.

SEI Chemical is a specialty chemical developer, formulator and manufacturer. The Company currently sells world-class construction, oil and gas, industrial and consumer technologies and products directly to commercial end users and through select resellers and distributors.



This company was founded on the belief that environmentally destructive approaches to problem solving in any industry are no longer viable. Our primary motivation is an unyielding commitment to further develop environmentally sensitive products that will help corporations, governments and citizens overcome a wide range of operational, infrastructure and socio-economic problems.

What separates SEI Chemical is our ability to incorporate our chemical technologies into a wide variety of products, environments and applications. Our clients depend on us to deliver high end unique technologies that add a tremendous amount of value to their existing technologies and businesses.

Our mission is to invent environmentally aware solutions that have a constructive and beneficial global impact.



home

technology

products

research &amp; development

private label

Cu

07.02

## Contact Us

19215 Parthenia Street - Unit B  
Northridge, California, USA 91324

Tel: 818 998 3538  
Fax: 818 998 5456  
[info@seichemical.com](mailto:info@seichemical.com)

Would you like more information?

Please fill out the form below to receive an information package.

**\* Required fields.**

* Name									
Company									
Title									
Suite Number									
* Address									
* City									
* State/Prov									
* Country									
Zip/Postal Code									
Phone									
Fax									
Email									
* Please list the products you are interested in									
* Comments / Inquiries									



SEI™

[home](#)[technology](#)[products](#)[research & development](#)[private label](#)

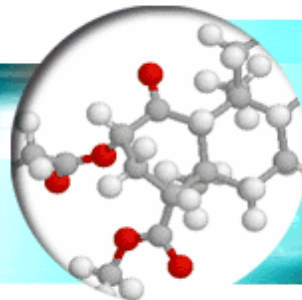
SEI™ ADVANCED CHEMICAL TECHNOLOGY™

02

## Tc Technology

02 02

SEI Chemical develops unique technologies that can be easily incorporated into a wide variety of products, applications and industries. Our Technologies either solve major operational or product problems, and they help other companies expand and leverage their products to further tap current and new market places.

[SEI Corrosion](#)[Prevention Technology -](#)[CPT™](#)[Mold Preventative](#)[Additive: SEI Mold](#)[Resistant Building](#)[System - MRBS™](#)[Water Proffing Additive -](#)[WPAT™](#)

(C) Copyright. SEI Group. 2002. [Home](#) | [Technology](#) | [Products](#) | [R & D](#) | [Private Labels](#) | [About Us](#) | [Contact Us](#)

SEI™

[home](#)[technology](#)[products](#)[research & development](#)[private label](#)

SEI™ ADVANCED CHEMICAL TECHNOLOGY™

04

## Pr Products

04 02

### SEI Products

At SEI Chemical our products stem from tackling major operational, infrastructural and socio-economic problems that governments and citizens face on a day-to-day basis. When approached with a scenario our team and global resources pull together and create wonderful, useful and sustainable solutions. That maintains our unyielding commitment to our clients in helping them to overcome their problems in a way that is economically compelling to them; that is, in a way that is sensitive to total product value.

*We believe "technological innovation" and "environmental sensitivity" must work hand-in hand.*

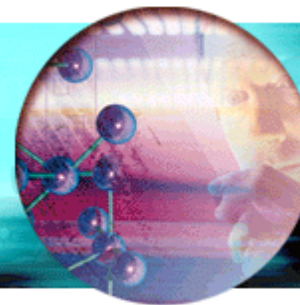
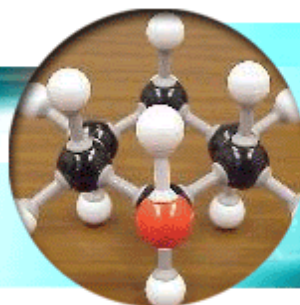
Our experience has been built upon our ability to problem-solve in industries that are accustomed to more traditional solutions, or in situations where environmental solutions are unprecedented due to their perceived lack of technological innovation and value. It is from this vantage point that we are able to offer the highest level of expertise available in the industry. The primary reason that our solutions are so value orientated is that we will not pursue products that are not viable at affordable price points. We are very aware that affordability and performance are crucial to making an environmentally sensitive solution compelling.

---

(C) Copyright. SEI Group. 2002. [Home](#) | [Technology](#) | [Products](#) | [R & D](#) | [Private Labels](#) | [About Us](#) | [Contact Us](#)

## Rd Research & Development

SEI Chemical is first and foremost a Research, Development and Technology company. Corporations and governments approach SEI Chemical with demanding, challenging and complicated problems that need to be solved chemically. We are strategically positioned and acutely connected with raw material suppliers all over the world, with research capabilities to find niche and unique raw materials. We can efficiently and environmentally blend, test and invent fascinating chemical combinations to help you reach your goals.



Our team of SEI chemists all have approximately fifteen years experience in chemical formulating and are continuously pushing the envelope. We encourage our chemists to dive into new and leading edge untapped territories. When a project is undertaken an initial assessment is done based on these three categories:

- ❖ **Desired Chemical Performance**
- ❖ **Environmental Requirements**
- ❖ **Cost Analysis**

First, a Global Research Initiative is done to scout out all potential raw materials. We then take each of the raw materials found and begin the final selection process that is based on the aforementioned three categories. Once the raw materials have been selected they are then taken "in house" and the laboratory begins the formulation process. We always provide our clients with as many possible finished product samples for them to analyze and test with our Research Staff to maximize their overall product goals.



Our facilities are equipped with top of the line blending, packaging and storage equipment. Our Private Label capabilities can take your project from product idea to a finished, labeled, packaged and shipped product in a matter of weeks.



Our logistics team can efficiently warehouse and ship all over the world to help minimize your operational down times. We specialize in bringing our extraordinary technology and expertise directly to our clients so your corporation can financially benefit from a constant stream of new and progressive product offerings.

Many of our own SEI products and formulations are private labeled for other corporations who feel the addition of specific SEI products would help them gain a market advantage in their industry sector. SEI Chemical is involved with a variety of exclusive and non-exclusive licensees, resellers, private label resellers and distributors arrangements.


[home](#)
[technology](#)
[products](#)
[research & development](#)
[private label](#)
**SEI™** ADVANCED CHEMICAL TECHNOLOGY™

## Pr Products

04 02

### SEI CPT Technology™ - Corrosion Preventative Technology

CPT Technology is a highly charged and durable migrational molecule that has the ability to penetrate and travel through a wide variety of mediums in order to find and bond with all types of metal. The CPT molecule needs to fulfill its ionic attraction by bonding with either ferrous or non-ferrous metal. Once the CPT molecule has found metal it creates a highly durable, resilient and robust chemical bond. This bond provides extensive protection for long periods of time in very harsh environments.

We have incorporated our CPT Technology into a high-end line of solvent and water-base industrial coatings, powders that can be used in wet or dry applications, oil based products and plastic packaging products used in industrial and high-tech applications.

SEI Chemical distinguishes us from our competition because of our ability to incorporate CPT Technology into our exceptional line of Corrosion Proof Products. This capability guarantees that your product stays corrosion free for its entire life cycle and allows your product to provide its traditional performance characteristics totally undisturbed by its environment.

#### ▼ Corrosion Proof Products

[Primer](#)
[Top - Coat](#)
[Primer - EN](#)
[Top Coat - EN](#)
[Rust Converter](#)
[Coat](#)
[Oil Base](#)
[Powder](#)
[Plastic Films](#)
[Mothballing & Lay-Up](#)
[Services](#)
[CPT Concrete](#)
[Corrosion Proofer](#)
[▶ Graffiti Products](#)
[▶ Mold Proof Products](#)
[▶ Industrial Vehicle Protective Coatings](#)
[▶ Construction Chemical & Form Accessories](#)

(C) Copyright. SEI Group. 2002. [Home](#) | [Technology](#) | [Products](#) | [R & D](#) | [Private Labels](#) | [About Us](#) | [Contact Us](#)

## SEI Corrosion Proof™ Primer

### ▼ Corrosion Proof Products Primer

[Top - Coat](#)[Primer - EN](#)[Top Coat - EN](#)[Rust Converter](#)[Coat](#)[Oil Base](#)[Powder](#)[Plastic Films](#)[Mothballing & Lay-Up](#)[Services](#)[CPT Concrete](#)[Corrosion Proofer](#)[► Graffiti Products](#)[► Mold Proof Products](#)[► Industrial Vehicle  
Protective Coatings](#)[► Construction Chemical &  
Form Accessories](#)

The SEI Corrosion Proof Primer utilizes CPT™ Technology (Corrosion Preventative Technology). This is a highly charged and durable migrational molecule that has the ability to penetrate and travel through a wide variety of mediums in order to find and bond with all types of metal. The CPT molecule needs to fulfill its ionic attraction by bonding with either ferrous or non-ferrous metal. Once the CPT molecule has found metal it creates a highly durable, resilient and robust chemical bond. This bond provides extensive protection for long periods of time in very harsh environments. The Corrosion Proof Primer is an accelerated drying, corrosion inhibitive, non-lifting primer for use on ferrous and non-ferrous metal. This product features excellent adhesion, water resistance and long-term corrosion prevention. This product contains no added lead, chromates or heavy metal compounds. This is an Environmental System. This coating resists sagging with excellent flexibility. SEI Corrosion Proof Primer is non-toxic and is easily weldable.

### Recommended Uses & Topcoat

Use on well-cleaned structural steel, beams, posts, tanks, plate stock and iron in any application, which requires corrosion resistance with exceptional adhesion. May be top coated with the Corrosion Proof Topcoat, Corrosion Proof Topcoat-EN or the Corrosion Proof Offshore Coat.

### Product Data

- Drying Time: 2 Hours maximum
- Finish: Low Sheen
- Colors: Gray
- Non-Volatile Content: 53-58 %
- Recommended Mills Per Coat: Wet: 4.29 - 5.71 mils. Dry: 2.50-2.50 mils
- Salt Spray (ASTM B-117): 880-1100 hr @ 2 mils - In VCI System
- Humidity (ASTM D-1748): 2000+hr. @ 2 mils - In VCI System
- Shelf Life: 12 months
- Theoretical Coverage: 520 sq.ft/gal @ 1 Mil dry film. Actual coverage will be less due to job conditions, type of substrate, loss in container and variations in application efficiencies.

### Application Instructions & Surface Preparation

- Surface must be clean, dry free from oil, grease, rust, chalking pigment, mildew, loose scaling paint or any foreign matter.
- Round off all rough welds and sharp edges. Remove weld splatter and blast particles.
- Degrease and phosphate etch, etc.
- Dry abrasive commercial blast.

### Application Conditions

Surface temperature must be 3 oC above the dew point to ensure that moisture condensation does not occur during application and drying period. Apply only when air and surface temperature are between 7 oC and 28 oC.

### Application Equipment

Method of Application: Air or airless spray. Airless tips: .011" - .015"

### Packaging

5-gal pail  
55-gal drum

[Download PDF version](#)

(You will need Adobe's free [Acrobat Reader](#) to view).

---

(C) Copyright. SEI Group. 2002. [Home](#) | [Technology](#) | [Products](#) | [R & D](#) | [Private Labels](#) | [About Us](#) | [Contact Us](#)

**SEI Corrosion Proof™ Top - Coat**

The SEI Corrosion Proof Top - Coat utilizes CPT™ Technology (Corrosion Preventative Technology). This is a highly charged and durable migrational molecule that has the ability to penetrate and travel through a wide variety of mediums in order to find and bond with all types of metal. The CPT molecule needs to fulfill its ionic attraction by bonding with either ferrous or non-ferrous metal. Once the CPT molecule has found metal it creates a highly durable, resilient and robust chemical bond. This bond provides extensive protection for long periods of time in very harsh environments. The Corrosion Proof Topcoat is a fast drying, glossy, high-build durable topcoat that provides long-term corrosion protection. Excellent for all types of production line finishing, industrial and commercial applications where speed is essential. This coating has great chemical, petroleum, humidity and chloride resistance. For extreme environments and further protection the SEI Corrosion Proof Offshore Coat can be used over this topcoat to allow a higher concentration of the CPT molecule. This is an Environmental System. Available in clear, white, black, gray and a full range of custom colors. SEI Corrosion Proof Topcoat contains a non-toxic resin and is easily weldable.

**Features & Recommended Uses**

- For use on structural steel, equipment, machinery, piping, pipelines, offshore platforms and equipment, vessels, tanks, maintenance finishes, corrosive environments (primer required), and any other metal applications and where good exterior protection is required.
- Color: Complete range of factory mixed and custom colors
- Finish: Gloss
- Long-Term protection
- Multimetal Protection
- Consistent Film
- Film Type: Hard
- Prohesion (ASTM G-85): 600 hrs. @ 2 mils
- Non-Volatile Content - Solids: 48-52 %
- Recommended Mills per Coat: 2.0 - 2.5 mils dry, 2.94 - 4.41mils wet
- Viscosity Mixed: 65 - 70 KU
- Shelf Life: 12 months
- Theoretical Coverage: 300-400 sq.ft./gal.@1 mil dry film thickness. Actual coverage will vary due to job conditions, type of substrate and efficiency of application equipment.

**Method of Application**

Dry Time: Temp of 25C: Touch Dry: 1/2 hour, Hard Dry: 1-2 hours Recoat: 1 hour  
 Air or Airless Spray: Airless tips: .011" - .015  
 Brush or roll  
 Conventional applicators

**Recommended Substrate & Primer**

STEEL: SEI Corrosion Proof Primer or SEI Corrosion Proof Rust Converter  
 ALUMINUM: SEI Corrosion Proof Primer or SEI Corrosion Proof Rust Converter  
 GALVANIZED: SEI Corrosion Proof Primer or SEI Corrosion Proof Rust Converter

**Surface Preparation**

Surfaces must be clean, dry and free of contamination such as oils, grease, wax, dirt or any foreign matter. A minimum SSPC SP-3 power tool cleaning is recommended on bare metal.

**Limitations**

For mild to moderate exposure. Not recommended for immersion service. Any recoating required should be done within 1 hour, otherwise a minimum of 24 hours and possibly up to as much as 72 hours may be necessary to

## ▼ Corrosion Proof Products

[Primer](#)[Top - Coat](#)[Primer - EN](#)[Top Coat - EN](#)[Rust Converter](#)[Coat](#)[Oil Base](#)[Powder](#)[Plastic Films](#)[Mothballing & Lay-Up](#)[Services](#)[CPT Concrete](#)[Corrosion Proofer](#)[► Graffiti Products](#)[► Mold Proof Products](#)[► Industrial Vehicle Protective Coatings](#)[► Construction Chemical & Form Accessories](#)

avoid wrinkling or lifting. Always do a test patch before proceeding to ensure performance.

### **Packaging**

5-gal pail  
55-gal drum

[Download PDF version](#)

(You will need Adobe's free [Acrobat Reader](#) to view).

---

(C) Copyright. SEI Group. 2002. [Home](#) | [Technology](#) | [Products](#) | [R & D](#) | [Private Labels](#) | [About Us](#) | [Contact Us](#)

**SEI Corrosion Proof™ Primer - EN**

The SEI Corrosion Proof Primer - EN utilizes CPT™ Technology (Corrosion Preventative Technology). This is a highly charged and durable migrational molecule that has the ability to penetrate and travel through a wide variety of mediums in order to find and bond with all types of metal. The CPT molecule needs to fulfill its ionic attraction by bonding with either ferrous or non-ferrous metal. Once the CPT molecule has found metal it creates a highly durable, resilient and robust chemical bond. This bond provides extensive protection for long periods of time in very harsh environments. The SEI Corrosion Proof Primer-EN is an environmentally friendly, non-toxic, waterborne primer with outstanding corrosion resistance. This coating is based on a hydrophobic latex resin system. Our most powerful migrational corrosion inhibitor works phenomenally well with this particular resin system and will 100% prevent the oxidation process. The SEI Corrosion Proof Primer-EN is designed to be used with other waterborne topcoats or solvent-based topcoats. This is a fast-drying, thixotropic, low viscosity coating that resists sagging. It also has excellent resistance to settling in the can. This dry-to-touch film offers extended protection in very harsh environments. Excellent flexibility gives optimal outdoor performance without cracking or chipping due and has excellent UV resistance.

**Film Type:** Hard**Dry Film Thickness mil:** 2 mil (50 µm)**Dry Time:** 20 min.**VOC g/l (lbs/gal):** 150 (1.25)**Solids %:** 50**Coverage ft<sup>2</sup>/gal (m<sup>2</sup>/l):** 306 (7.5)**Application Method:** Spray, dip, roll, brush**Topcoatability:** Yes**Length of Protection:** Long Term**Metals Protected**

- Carbon Steel
- Cast Iron
- Aluminum
- Stainless Steel

**Application**

Check for settling in the can. If necessary, gently agitate.

Conventional Sprayer

Best results can be obtained using a 0.013"-0.017" (0.03 cm - 0.04 cm) tip at 1200-1700 psi (83-117 bar).

**Typical Properties**

- Appearance Gray viscous liquid
- Non-volatile Content 46-51%
- pH 8.5-9.5 (Neat)
- Density 9.7-10.2 lb/gal (1.16-1.22 kg/l)
- Solids by Volume 35-39%
- Recommended DFT 1.5-3.0 mils (37.5-75 microns)
- Theoretical Spread Rate 613 ft<sup>2</sup> /gal @ 1 mil
- 15 m<sup>2</sup> /l @ 25 microns
- Dry to Touch - 30 minutes @ 75°F (24°C)
- Temperature Stability 45°-90°F (7°-32°C)
- Minimum Interval before Over coating (Varies)
- 0.5-6.0 hours
- Flash Point >248°F (120°C)
- VOC (ASTM-3960) 1.2 lb/gal (143.8 g/l)
- Viscosity 1600-2200 cps

## ▼ Corrosion Proof Products

## Primer

## Top - Coat

## Primer - EN

## Top Coat - EN

## Rust Converter

## Coat

## Oil Base

## Powder

## Plastic Films

## Mothballing &amp; Lay-Up

## Services

## CPT Concrete

## Corrosion Proofer

## ▶ Graffiti Products

## ▶ Mold Proof Products

## ▶ Industrial Vehicle Protective Coatings

## ▶ Construction Chemical &amp; Form Accessories

**Corrosion Resistant Data** - (on carbon steel 1010 Q-panels)

	<b>Dry Film Thickness - MILS (Microns)</b>	<b>Hours to Failure</b>
<b>ASTM B-117</b> - (Salt spray)	2.0 (50)	800-1100
<b>ASTM D-1748</b> - (Humidity)	2.0 (50)	2000+
<b>AASTM G-85 A5</b> - (Prohesion)	2.0 (50)	800-1100

**Packaging & Storage**

- 5-gal & 55-gal
- Minimum storage temperature: 35°F (2°C)
- Maximum storage temperature: 120°F (49°C)
- Recommended Thinner Fresh Water
- Airless Spray None required
- Store in heated warehouse to avoid freezing.
- Shelf life of 12 months.

[Download PDF version](#)

(You will need Adobe's free [Acrobat Reader](#) to view).

---

(C) Copyright. SEI Group. 2002. [Home](#) | [Technology](#) | [Products](#) | [R & D](#) | [Private Labels](#) | [About Us](#) | [Contact Us](#)





home

technology

products

research &amp; development

private label

SEI™ ADVANCED CHEMICAL TECHNOLOGY™

04

## Pr Products

04 02

### SEI Corrosion Proof™ Top Coat - EN

The SEI Corrosion Proof Top Coat - EN utilizes CPT™ Technology (Corrosion Preventative Technology). This is a highly charged and durable migrational molecule that has the ability to penetrate and travel through a wide variety of mediums in order to find and bond with all types of metal. The CPT molecule needs to fulfill its ionic attraction by bonding with either ferrous or non-ferrous metal. Once the CPT molecule has found metal it creates a highly durable, resilient and robust chemical bond. This bond provides extensive protection for long periods of time in very harsh environments. The SEI Corrosion Proof Top Coat-EN is an environmentally friendly, non-toxic and high-build topcoat that provides high-end long-term corrosion prevention for metal in tough atmospheric conditions. The SEI Corrosion Proof Top Coat-EN is excellent for applications that require a thicker coating for added physical protection. It can be applied directly to metal or used in conjunction with a primer. This coating has excellent UV light resistance.

**Film Type:** Hard

**Dry Film Thickness mil:** 5-7 mil (125-175 µm)

**Dry Time:** 1 hr.

**VOC g/l (lbs/gal):** 150 (1.25)

**Solids %:** 40

**Coverage ft<sup>2</sup>/gal (m<sup>2</sup>/l):** 110 (2.9)

**Application Method:** Spray, dip, roll, brush

**Topcoatability:** Yes

**Length of Protection:** 8 years

#### Features

- Consistent film build
- High-build film (6-8 mils/150-200 microns) DFT
- Multimetal protection
- Long-term protection (10 years)
- Semi-gloss appearance

#### Application

The SEI Corrosion Proof Top Coat-EN must be thoroughly mixed prior to use.

Apply by brush, spray or roller. Normal WFT of 13-15 mils (325-375 microns) yields 6-8 mils (150-200 microns) DFT.

NACE SSPC ARS 2 or 3 SP 6 or 10 Low A-3 or better

Product cleanup: Use soap and water to cleanup tools and over spray.

#### Typical Properties

- Appearance Gray viscous liquid
- Dry to Cure Time 24-72 hr.
- Dry to Recoat Time 4-7 hr.
- Dry to Touch Time 30-60 minutes
- Film Type Hard
- Non-volatile Content 47-57%
- Prohesion (ASTM G-85) 500 hr. @ 4.5 mils (113 microns) DFT on Carbon Steel
- Shelf Life 12 months @ 75°F/24°C
- Theoretical Coverage 150-180 ft<sup>2</sup> /gal at 5 mils (3-4 m<sup>2</sup> /l at 125 microns)
- VOC 146 g/l (1.22 lb/gal)
- Density 9.8-10.3 lb/gal (1.18-1.24 kg/l)

#### Limitations

#### ▼ Corrosion Proof Products

[Primer](#)

[Top - Coat](#)

[Primer - EN](#)

[Top Coat - EN](#)

[Rust Converter](#)

[Coat](#)

[Oil Base](#)

[Powder](#)

[Plastic Films](#)

[Mothballing & Lay-Up](#)

[Services](#)

[CPT Concrete](#)

[Corrosion Proofer](#)

▶ [Graffiti Products](#)

▶ [Mold Proof Products](#)

▶ [Industrial Vehicle Protective Coatings](#)

▶ [Construction Chemical & Form Accessories](#)

Avoid using in situations where the coating is immersed in water or other liquids as this could lead to softening of the film.

### **Packaging & Storage**

5-gal & 55-gal  
Keep product from freezing.

[Download PDF version](#)

(You will need Adobe's free [Acrobat Reader](#) to view).

---

(C) Copyright. SEI Group. 2002. [Home](#) | [Technology](#) | [Products](#) | [R & D](#) | [Private Labels](#) | [About Us](#) | [Contact Us](#)

**SEI Corrosion Proof™ Rust Converter**

The SEI Corrosion Proof Rust Converter utilizes CPT™ Technology (Corrosion Preventative Technology). This is a highly charged and durable migrational molecule that has the ability to penetrate and travel through a wide variety of mediums in order to find and bond with all types of metal. The CPT molecule needs to fulfill its ionic attraction by bonding with either ferrous or non-ferrous metal. Once the CPT molecule has found metal it creates a highly durable, resilient and robust chemical bond. This bond provides extensive protection for long periods of time in very harsh environments. The SEI Corrosion Proof Rust Converter is a water-based primer recommended for application to rusty or poorly prepared steel surfaces where further corrosion protection is required and good surface preparation is difficult to achieve. SEI Corrosion Proof Rust Converter is formulated to penetrate rust, eliminate rust, penetrate to the bare metal and stop further rusting. SEI Corrosion Proof Rust Converter allows the CPT molecule to penetrate and modify the surface rust into a hydrophobic passive layer. SEI Corrosion Proof Rust Converter combines the above-mentioned technology with a high solids waterborne moisture displacing resin with extremely low water vapor permeability. SEI Corrosion Proof Rust Converter does not contain tannic, phosphoric acids or any heavy metals and is a low VOC and environmentally friendly product. Furthermore, it provides extensive long-term corrosion protection for poorly prepared substrates, and can be top-coated with solvent-based and water-based paints with no bleeding what so ever.

**Features**

- SEI Corrosion Proof Rust Converter converts rust quickly and can be applied under varying weather conditions
- Provides >800 hours of corrosion protection with 3-mil (75 microns) application under Salt Spray conditions (ASTM B 117), on pre-rusted steel parts
- Works even in the presence of excess salt contamination (perfect for marine applications)
- The resin used in the primer provides flame-retardancy properties to the product
- Provides excellent protection against and totally prevents re-rusting
- Promotes top-coating adhesion
- Water-based
- VOC compliant
- AQMD Compliant
- Environmentally friendly, non-toxic
- Non-flammable, non-combustible

**Properties**

- Appearance milky off-white viscous liquid
- Total Solids, by weight 55-58%
- Total Solids, by volume 40-42%
- Density 11 lb/gal (1.32 kg/l)
- Salt Spray (ASTM B 117) >800 hours at 2.3-3.0 mils (37.5-75 microns DFT)
- VOC 0.56 lb/gal (0.07 kg/l)
- Theoretical Spread Rate 350-450 sq.ft/gal @ 1mil

**Typical Application**

SEI Corrosion Proof Rust Converter is recommended for use on all steel surfaces as a rust converter primer. The product can be used in situations where proper cleaning or sandblasting is difficult.

- Industrial maintenance
- General metal
- Marine

**Application**

## ▼ Corrosion Proof Products

[Primer](#)[Top - Coat](#)[Primer - EN](#)[Top Coat - EN](#)[Rust Converter](#)[Coat](#)[Oil Base](#)[Powder](#)[Plastic Films](#)[Mothballing & Lay-Up](#)[Services](#)[CPT Concrete](#)[Corrosion Proofer](#)[▶ Graffiti Products](#)[▶ Mold Proof Products](#)[▶ Industrial Vehicle Protective Coatings](#)[▶ Construction Chemical & Form Accessories](#)

It is recommended that any loose rust be removed with a wire brush and the rusty steel surface washed with high-pressure water to remove excess salt contamination. Brush, roll or spray SEI Corrosion Proof Rust Converter with no surface show-through at 3-5 mils (75-125 microns) wet film thickness. Brush or roll application is preferred to ensure penetration into the rust. The coating can be applied to dry or damp surfaces. A second coat of SEI Corrosion Proof Rust Converter should be applied within 20-30 minutes after the first application to ensure maximum protection. Allow to dry for 8-12 hours before applying the SEI Corrosion Proof Topcoat.

#### Limitations

- The resin system in the primer is not UV stable and changes color in outside conditions. This does not change converting or protection properties and does not affect the topcoat or topcoat adhesion.
- For proper application, the product should always be mixed thoroughly before use.
- On certain types of rust, various degrees of darkening may be visible, and may even be incomplete under certain drying conditions. The degree of darkening does not affect the coating; the primer will continue to convert rust. Upon drying, the formulation will exhibit excellent base corrosion preventative performance.

#### Packaging & Storage

SEI Corrosion Proof Rust Converter is available in 5-gallon plastic containers and 55-gallon metal drums. Keep product from freezing. The shelf life of the coating is one year.

#### [Download PDF version](#)

(You will need Adobe's free [Acrobat Reader](#) to view).



home

technology

products

research &amp; development

private label



## Pr Products

### SEI Corrosion Proof™ Coat

#### ▼ Corrosion Proof Products

[Primer](#)
[Top - Coat](#)
[Primer - EN](#)
[Top Coat - EN](#)
[Rust Converter](#)
[Coat](#)
[Oil Base](#)
[Powder](#)
[Plastic Films](#)
[Mothballing & Lay-Up](#)
[Services](#)
[CPT Concrete](#)
[Corrosion Proofer](#)
[► Graffiti Products](#)
[► Mold Proof Products](#)
[► Industrial Vehicle Protective Coatings](#)
[► Construction Chemical & Form Accessories](#)

The SEI Corrosion Proof Coat utilizes CPT™ Technology (Corrosion Preventative Technology). This is a highly charged and durable migrational molecule that has the ability to penetrate and travel through a wide variety of mediums in order to find and bond with all types of metal. The CPT molecule needs to fulfill its ionic attraction by bonding with either ferrous or non-ferrous metal. Once the CPT molecule has found metal it creates a highly durable, resilient and robust chemical bond. This bond provides extensive protection for long periods of time in very harsh environments. SEI Corrosion Proof Coat is a brown thixotropic coating. It comes in oil based or solvent-based carriers. The residual film, after solvent evaporation has extreme resistance to salt water and salt spray, making SEI Corrosion Proof Coat particularly useful in marine, industrial, and off-shore corrosion proofing applications. The film dries semi-clear and transparent. SEI Corrosion Proof Coat provides optimal long-term corrosion protection, for ferrous and non-ferrous metals exposed to harsh environments.

**Film Type:** Waxy

**Dry Film Thickness mil:** 2-3 mil (50-75 µm)

**Dry Time:** 30 min.

**VOC g/l (lbs/gal):** 2.9-3.1 lb/gal (347-372 g/l)

**Solids %:** 55

**Coverage ft<sup>2</sup>/gal (m<sup>2</sup>/l):** 300 (7.4)

**Application Method:** Spray, dip, roll, brush

**Topcoatability:** Yes

**Length of Protection:** 5 years

#### Advantages

- Dry to touch film properties allow protected metal surfaces to be easily handled.
- No surface preparation, as SEI Corrosion Proof Coat will adhere to the pre-rusted, oily and dirty surfaces.
- A thixotropic liquid, self-healing, resistant to sag, run-off, and flow.
- Excellent U.V. resistance, providing optimal outdoor protection without cracking or chipping of protective films after prolonged exposures to sunlight.
- Universal protection for ferrous and non-ferrous metals and alloys.
- The non-conductive film with high resistivity and insulating properties effectively prevents galvanic corrosion between dissimilar metals.
- Has moisture-displacing characteristics and penetrating film characteristics
- Thermally stable coatings over a broad range of temperature.
- Applicable to the following specifications: MIL-C-0083933A and MIL-C-16173D
- Moisture displacing and penetrating film characteristics.
- Easy removal by petroleum solvents.

#### Typical Properties

- Appearance brown viscous liquid
- Coverage 300-330 ft<sup>2</sup> /gal @ 3 mils (7-8 m<sup>2</sup> /l @ 75 microns)
- Drying to touch time 0.5-2 hours
- Dry cure film time 12-24 hours
- Shelf Life 24 months @ 75°F (24°C)
- Non-volatile Content 57-61%
- Specific Gravity: 0.92 at 25°C
- Viscosity at 23°C 600-5,000 cps (6 rpm)
- VOC 2.9-3.1 lb/gal (347-372 g/l)
- Density 7.4-7.6 lb/gal (0.89-0.91 kg/l)
- Flash point: Concentrate form 232°C
- Carrier: Mineral spirits/Napthenic oil

## Features

- Flexible
- Excellent salt spray protection
- Excellent outdoor protection
- Multimetal protection
- Excellent UV resistance
- Moisture displacing
- Cured film is heat stable up to 392°F (200°C)
- Conforms to MIL-C-16173D (Grades 1 and 2)
- NATO 6850-66-132-5848
- NATO 6850-55-132-6099
- NSN 8030-00-62-6950

## Protection Properties

	ASTM	DFT	Carbon Stell - (1010)
<b>Salt spray</b>	B-117	2-3 mils (50-75 microns)	900-1500 hr.

## Applications

### *Maintenance:*

Protection of structural plant and equipment  
 Mothballing refineries, power plants, and chemical plants  
 External surfaces of large machines, pipes, pumps, heat exchangers, etc - during standby, field storage, or operation

### *Shipping & Storage:*

Covered or uncovered packages shipped overseas and/or during extended on-site storage

### *Construction:*

Steels for fabrication, structural or storage and in field use  
 Concrete reinforcing bars, aluminum or steel sidings joints, profiles, bridges, structures, casings and steel roofs.

### *Marine & Offshore:*

External and internal surfaces of offshore platforms and equipment.  
 Ballast tanks, storage, and process vessels.  
 Castings, pumps, valves, and compressors, heat exchangers, boilers, turbines, and transformers.  
 Wire rope, cable, wire, and chains.  
 Internal and external surfaces of drill pipe, sucker rods, and other tubular products.

### *OEM:*

Internal and external surfaces of engines.  
 Bearings, brake drums, engine components.  
 Frames, cabs, stampings, castings and plate steel.  
 Transmission, hydraulic pistons, cylinders, and equipment undercoating

- Pipe coating
- Parts storage
- Underbody coating
- Wire rope
- Steel plate
- Machined parts

## Method of Application

- Dipping, spraying or brushing are recommended methods of applying - Film thickness of 2 mils to 5 mils.
- SEI Corrosion Proof Coat can be applied over pre-rusted or oily surfaces.

### [Download PDF version](#)

(You will need Adobe's free [Acrobat Reader](#) to view).



▼ [Corrosion Proof Products](#)

[Primer](#)[Top - Coat](#)[Primer - EN](#)[Top Coat - EN](#)[Rust Converter](#)[Coat](#)[Oil Base](#)[Powder](#)[Plastic Films](#)[Mothballing & Lay-Up](#)[Services](#)[CPT Concrete](#)[Corrosion Proofer](#)[▶ Graffiti Products](#)[▶ Mold Proof Products](#)[▶ Industrial Vehicle  
Protective Coatings](#)[▶ Construction Chemical &  
Form Accessories](#)

## SEI Corrosion Proof™ Oil Base

The SEI Corrosion Proof Oil Base utilizes CPT™ Technology (Corrosion Preventative Technology). This is a highly charged and durable migrational molecule that has the ability to penetrate and travel through a wide variety of mediums in order to find and bond with all types of metal. The CPT molecule needs to fulfill its ionic attraction by bonding with either ferrous or non-ferrous metal. Once the CPT molecule has found metal it creates a highly durable, resilient and robust chemical bond. This bond provides extensive protection for long periods of time in very harsh environments. The SEI Corrosion Proof Oil Base is our best corrosion inhibitor for use as an oil additive and/or long-term corrosion preventative oil based coating. This product is excellent for mothballing, shipping or storage of parts and equipment. As an additive, in small percentages, it has a minimal effect on viscosities. It has extreme resistance to salt water, salt spray and humidity making SEI Corrosion Proof Oil Base particularly useful in marine, industrial, commercial, operational and offshore corrosion preventative applications. This product provides optimal long-term corrosion protection, for ferrous and non-ferrous metals exposed to harsh environments.

**Dry Film Thickness mil:** 1-2 mil (25-50 µm)

**Dry Time:** 1 Hour

**VOC g/l (lbs/gal):** 30 (.25)

**Solids %:** 97

**Coverage ft<sup>2</sup>/gal (m<sup>2</sup>/l):** 800 (19.6)

**Application Method:** Spray, dip, roll, brush

**Length of Protection:** 5 Years

### Features

- Self-healing
- Temperature stable up to 180°F (82°C)
- Excellent lubricity
- Extends tool and equipment life for metalworking operations
- Excellent outdoor protection
- Excellent oil additive
- Dilutable with oil
- Meets MIL-C-16173D (Grade 2), QPL product
- NSN 8030-00-244-1297v

### Advantages

- Allows protected metal surfaces to be easily handled.
- No surface preparation, as SEI Corrosion Proof Oil Base will adhere to the pre-rusted, oily and dirty surfaces.
- A thixotropic liquid, self-healing, resistant to sag, run-off, and flow.
- Excellent U.V. resistance, providing optimal outdoor protection without cracking or chipping of protective films after prolonged exposures to sunlight.
- Universal protection for ferrous and non-ferrous metals and alloys.
- The non-conductive film with high resistivity and insulating properties effectively prevents galvanic corrosion between dissimilar metals.
- Has moisture-displacing characteristics and penetrating film characteristics
- Thermally stable over a broad range of temperature.
- Applicable to the following specifications: MIL-C-0083933A and MIL-C-16173D
- Easy removable with mild solvents.

### Typical Properties

**Appearance:** Oil Base tan liquid

**Specific Gravity:** 0.92 at 25°C



**Film type:** Dry Oily film  
**Flash point:** Concentrate form 233°F  
**Viscosity:** 10,000-40,000 cps  
**Shelf Life:** 24 months @ 75°F (24°C)  
**Non-volatile Content:** 94-98%  
**Theoretical Spread Rate:** 500-525 ft<sup>2</sup> /gal @ 3 mils  
**Weight per Gallon:** 7.7-8.2 lb/gal (0.92-0.98 kg/l)

	ASTM	DFT	Carbon Stell - (1010)	Aluminum
<b>Humidity</b>	D-1748	1 mil (25 microns)	7000+ hr.	3000+ hr.
<b>Salt spray</b>	B-117	1 mil (25 microns)	700+ hr.	1200+ hr.

#### Applications

- Wire rope
- Electrical connections/wiring
- Sheltered coating
- Structural steel
- Gear protectant/lubricant
- Long-term (5+ years) equipment lay-up
- Stamping oil additive
- Drawing oil additive
- Cylinders
- Working/moving parts

#### Maintenance:

Protection of structural plant and equipment

Mothballing refineries, power plants, and chemical plants

External surfaces of large machines, pipes, pumps, heat exchangers, etc - during standby, field storage, or any operational equipment.

#### Shipping & Storage:

Covered or uncovered packages shipped overseas and/or during extended on-site storage

#### Construction:

Steels for fabrication, structural steel, metal forgings or storage of metals and in field use

Concrete reinforcing bars, aluminum or steel sidings joints, profiles, bridges, structures, casings and steel roofs

*Marine & Offshore:* External and internal surfaces of offshore platforms and equipment.

Ballast tanks, storage, and process vessels

Castings, pumps, valves, and compressors, heat exchangers, boilers, turbines, and transformers.

Wire rope, cable, wire, and chains.

Internal and external surfaces of drill pipe, sucker rods, and other tubular products.

#### OEM:

Internal and external surfaces of engines.

Bearings, brake drums, engine components.

Frames, cabs, stampings, castings and plate steel.

Transmission, hydraulic pistons, cylinders, and equipment undercoating

#### Method of Application & Packaging

- Product should be mixed thoroughly and uniform prior to use.
- Apply by dip, spray, roll or brush - Film thickness of 2 mils to 5 mils.
- SEI Corrosion Proof Oil Base can be applied over pre-rusted or oily surfaces.
- 5-gal & 55-gal

#### [Download PDF version](#)

(You will need Adobe's free [Acrobat Reader](#) to view).



SEI™

home

technology

products

research &amp; development

private label

SEI™ ADVANCED CHEMICAL TECHNOLOGY™

04

**Pr Products**

04 02

**SEI Corrosion Proof™ Powder**

The SEI Corrosion Proof Powder utilizes CPT™ Technology (Corrosion Preventative Technology). This is a highly charged and durable migrational molecule that has the ability to penetrate and travel through a wide variety of mediums in order to find and bond with all types of metal. The CPT molecule needs to fulfill its ionic attraction by bonding with either ferrous or non-ferrous metal. Once the CPT molecule has found metal it creates a highly durable, resilient and robust chemical bond. This bond provides extensive protection for long periods of time in very harsh environments. The SEI Corrosion Proof Powder is water-soluble and it contains the CPT corrosion-inhibiting molecule for wet or dry corrosion protection of all ferrous and non-ferrous metals including aluminum.

**Additional Features**

- Provides monomolecular inhibiting layer
- For Dry Applications use approximately 0.5 ounces of Powder to protect up to 1.0 cubic foot
- For Aqueous Applications with average environmental conditions, use 2.5% to 3.5% SEI Corrosion Proof Powder by weight of water. The dosage can be increased for more severe conditions
- Provides up to 40 months of continuous protection
- Provides liquid, vapor and interface protection above and below liquid levels
- Creates a durable monomolecular inhibiting layer on metal surface
- Does not contain phosphates, nitrites or heavy metals
- Can be used as an additive or as an end user product
- 100% Biodegradable, non-toxic, does not contain any heavy metals and is environmentally friendly

**Applications**

- High performing environmental Hydro test Additive
- Tubular structures, pipes and vessels - dry or wet
- Internal surfaces of compressors, turbines, engines, tanks, boilers, heat exchangers
- Steam condensate lines, closed circuit heating and cooling towers and systems
- Equipment during and after hydrotesting by dry fog
- Parts, components and completed assemblies during shipping and storage
- Equipment, parts, components etc. in packaging, shipping and storage
- Additive to shot-blasting media
- Additive to standing water
- Additive to all water systems or water based coating systems
- Voids, cavities and tanks

**Benefits**

- Vapor-phase inhibiting action protects inaccessible and recessed surfaces
- Products can be shipped to customers without ever removing the powder
- No regeneration is required as VCI will regenerate itself
- SEI Corrosion Proof is extremely healthy for internal systems
- If the SEI Corrosion Proof layer is disturbed by moisture or the opening of an enclosed space, the layer is replenished by continuous vapor redeposition
- No surface preparation is required
- Prevents corrosion on pre-coated and painted surfaces
- Does not increase alkalinity
- Provides economical protection for very large applications
- 100% biodegradable and environmentally friendly
- Very low toxicity (LD-50 = 5,000 mg oral-rat)
- Easy to apply

## ▼ Corrosion Proof Products

[Primer](#)[Top - Coat](#)[Primer - EN](#)[Top Coat - EN](#)[Rust Converter](#)[Coat](#)[Oil Base](#)[Powder](#)[Plastic Films](#)[Mothballing & Lay-Up](#)[Services](#)[CPT Concrete](#)[Corrosion Proofer](#)[▶ Graffiti Products](#)[▶ Mold Proof Products](#)[▶ Industrial Vehicle Protective Coatings](#)[▶ Construction Chemical & Form Accessories](#)

- SEI Corrosion Proof layer does not need to be removed prior to processing
- If required, Powder is easily removed by air gun or water flush
- Provides protection for very large applications

**Method of Application:**

Apply SEI Corrosion Proof Powder by dusting, fogging or sprinkling. Apply SEI Corrosion Proof Powder in aqueous form by spray, brush, flush or immersion. After application, simply cover or seal the interior cavity or void. Fogging is easily achieved by using a low-pressure air hose and sandblast cup. Large, conventional sandblasting systems can also be used. For Dry Powder Application with average environmental conditions, use per 0.5 ounces of SEI Corrosion Proof Powder per 1 cubic foot of enclosed space. The dosage can be increased for more severe conditions. For Aqueous Applications with average environmental conditions, use 2.5% to 3.5% SEI Corrosion Proof Powder by weight of water. The dosage can be increased for more severe conditions.

**Example Application:**

SEI Corrosion Proof Powder should be added to hydrotest waters. This solution is drained and the vessel sealed after completion of the test. SEI Corrosion Proof Powder is also typically blown into pipes or cavities with the openings closed or sealed afterwards.

**Method of Removal:**

If required, SEI Corrosion Proof Powder in Powder form can be easily removed by using a low-pressure air gun or by a water rinse. Typically, if applied in aqueous form, the product does not require removal. If necessary, a simple water rinse or flush will suffice.

**Typical Properties:**

Appearance - White crystalline Powder  
PH - 6.5-6.9

**Packaging & Storage:**

SEI Corrosion Proof Powder is available in standard 22-pound pails. Can be custom packaged. Store in a sealed container in a dry warehouse, and avoid direct exposure to sunlight with temperatures not exceeding 150°F (66°C). Under these conditions, shelf life is up to 24 months.

[Download PDF version](#)

(You will need Adobe's free [Acrobat Reader](#) to view).

SEI™

home

technology

products

research &amp; development

private label

SEI™ ADVANCED CHEMICAL TECHNOLOGY™

04

**Pr Products**

04 02

**SEI Corrosion Proof™ Plastic Films**

The SEI Corrosion Proof Plastic Films utilize CPT™ Technology (Corrosion Preventative Technology). This is a highly charged and durable migrational molecule that has the ability to penetrate and travel through a wide variety of mediums in order to find and bond with all types of metal. The CPT molecule needs to fulfill its ionic attraction by bonding with either ferrous or non-ferrous metal. Once the CPT molecule has found metal it creates a highly durable, resilient and robust chemical bond. This bond provides extensive protection for long periods of time in very harsh environments. The SEI Corrosion Proof VCI Films combine leading edge film technology with the most environmental and effective corrosion prevention technology for all metals in industrial and high-tech electrical applications. SEI Corrosion Proof Films protects metals from all types of corrosion including rust, tarnish, stains, white rust and oxidation for up to 5 years. SEI Corrosion Proof Films and bags replace conventional rust preventatives such as oils and inefficient desiccants. SEI Corrosion Proof Films eliminates all the degreasing or coating removal required in the past. Your product can now be used immediately. SEI Corrosion Proof Films are transparent, making it easy to identify metals and parts. All SEI Corrosion Proof products do not contain amines, phosphates or nitrites. They are environmentally acceptable for use and are much safer than traditional anti-corrosion products. SEI Corrosion Proof Films, wraps, bags and anti-static bags are non-toxic and recyclable.

**Properties**

SEI Corrosion Proof Films are extremely durable and have excellent puncture resistance and tear strength. SEI Corrosion Proof Films protect metal objects as small as a needle, as sensitive as a semi-conductor and as large as the contents of an oceangoing container. Metal parts packaged in SEI Corrosion Proof Films receive continuous protection against salt, excessive humidity, condensation, moisture, aggressive industrial atmospheres and dissimilar metal corrosion. The CPT molecules vaporize and then condense on all metal surfaces in the enclosed package. They reaches every area of your part, protecting its exterior as well as hard-to-reach interior surfaces. You get complete product protection during operation, storage as well as during domestic and overseas shipments, eliminating all corrosion for good.

**Metals Protected**

- Aluminum
- Galvanized Steel
- Carbon Steels
- Silicon Steel
- Stainless Steel
- Silver
- Copper
- Solder
- Brass

**Sizes & Constructions**

SEI Corrosion Proof Films are heat sealable and can be used with all types of manual or automated heat-seal packaging and equipment. The material is available in a variety of bags and sheeting-reinforced film, Zip-Lock and Auto-Bags, gusseted liners, bags-on-a-roll, perforated sheeting, stretch film, coil covers, shrink film and tubing- to protect small or large parts. Antistatic (ESD) and fire retardant (FR) varieties are available as well as coextruded constructions. SEI Corrosion Proof Films is available in a variety of gauges, ranging from 2 to 20 mils (50-500 microns) and widths from 2" to 50' (5.1 cm - 15 m). It conforms to military specifications, MIL-B-22019-C and MIL-B-22020-C.

**Physical Properties**

- [at 4 mils (100 microns)]
- PSI Bar Tensile Strength at break (PSI) 4511.7/4085.831108.2/28171.5

## ▼ Corrosion Proof Products

[Primer](#)[Top - Coat](#)[Primer - EN](#)[Top Coat - EN](#)[Rust Converter](#)[Coat](#)[Oil Base](#)[Powder](#)[Plastic Films](#)[Mothballing & Lay-Up](#)[Services](#)[CPT Concrete](#)[Corrosion Proofer](#)[▶ Graffiti Products](#)[▶ Mold Proof Products](#)[▶ Industrial Vehicle Protective Coatings](#)[▶ Construction Chemical & Form Accessories](#)

- Elongation at break (%) 878.3/872.9 6055.9/6018.7
- Tear Strength (GF) 3056.0/2933.021071.1/20223.
- Puncture Resistance (GF) 2554.0 17609.8

[Download PDF version](#)

(You will need Adobe's free [Acrobat Reader](#) to view).

---

(C) Copyright. SEI Group. 2002. [Home](#) | [Technology](#) | [Products](#) | [R & D](#) | [Private Labels](#) | [About Us](#) | [Contact Us](#)



home

technology

products

research &amp; development

private label

SEI™ ADVANCED CHEMICAL TECHNOLOGY™

## Pr Products

### SEI Mothballing & Lay - Up Services

SEI Chemical has designed and engineered the SEI Protection Program. This is a Mothballing, Lay up, Shipping and Storage Total Protection Program. This program was designed for the short and long-term protection of all interior or exterior equipment and/or manufactured products from the beginning to the end of any products or machines life cycle.

Our mission is to supply Cutting-Edge, High Performance, Non-Toxic, and Environmentally Acceptable Chemical Solutions. Please feel free to [contact us](#) with your Lay-Up or Mothballing issues. We will provide you with a the best possible options that will meet your environmental, performance and budgetary issues.

#### ▼ Corrosion Proof Products

[Primer](#)
[Top - Coat](#)
[Primer - EN](#)
[Top Coat - EN](#)
[Rust Converter](#)
[Coat](#)
[Oil Base](#)
[Powder](#)
[Plastic Films](#)
[Mothballing & Lay-Up](#)
[Services](#)
[CPT Concrete](#)
[Corrosion Proofer](#)
[▶ Graffiti Products](#)
[▶ Mold Proof Products](#)
[▶ Industrial Vehicle Protective Coatings](#)
[▶ Construction Chemical & Form Accessories](#)

(C) Copyright. SEI Group. 2002. [Home](#) | [Technology](#) | [Products](#) | [R & D](#) | [Private Labels](#) | [About Us](#) | [Contact Us](#)



home

technology

products

research &amp; development

private label

SEI™ ADVANCED CHEMICAL TECHNOLOGY™

04

## Pr Products

04 02

### CPT Concrete Corrosion Proofer

CPT Concrete Corrosion Proofer is a liquid concrete admixture or a topical liquid product that can be applied into the mix design or onto existing structures. Add CPT into the ready-mix plant, directly to the ready-mix truck drum, to portable mixers, directly into repair mortars or onto any existing structure. The CPT molecule is extremely attracted to metal. It migrates into the structure and finds the metal within and bonds to it creating extensive protection for decades. It protects reinforcing steel, carbon steel, galvanized steel and other metals embedded in concrete. Corrosion induced by carbonation, chloride and atmospheric attack can be prevented with the use of CPT Concrete Corrosion Proofer. It can also be used in repair mortars and grouts.

#### CPT Concrete Corrosion Proofer is recommended for use on:

- All reinforced, precast, prestressed, post-tensioned or marine concrete structures.
  - Steel-reinforced concrete bridges, highways and streets exposed to corrosive environments (carbonation, deicing salts and atmospheric attack).
  - Parking decks, ramps and garages.
  - All reinforced marine concrete structures.
  - Concrete piers, piles, pillars, pipe and utility poles.
- Restoration and repair of all reinforced concrete commercial and civil engineered structures.

CPT Concrete Corrosion Proofer offers engineers, owners, contractors, DOTs and government agencies a technology that will extend the life of all reinforced concrete structures.

- Organic, safe and environmentally friendly.
- Thoroughly lab and field tested.

Download PDF version  
(You will need Adobe's free [Acrobat Reader](#) to view).

(C) Copyright. SEI Group. 2002. [Home](#) | [Technology](#) | [Products](#) | [R & D](#) | [Private Labels](#) | [About Us](#) | [Contact Us](#)

#### ▼ Corrosion Proof Products

[Primer](#)

[Top - Coat](#)

[Primer - EN](#)

[Top Coat - EN](#)

[Rust Converter](#)

[Coat](#)

[Oil Base](#)

[Powder](#)

[Plastic Films](#)

[Mothballing & Lay-Up](#)

[Services](#)

[CPT Concrete](#)

[Corrosion Proofer](#)

[▶ Graffiti Products](#)

[▶ Mold Proof Products](#)

[▶ Industrial Vehicle  
Protective Coatings](#)

[▶ Construction Chemical &  
Form Accessories](#)



▶ [Corrosion Proof Products](#)▼ [Graffiti Products](#)[Graffiti Proofer](#)[Graffiti & Concrete](#)[Curing Agent](#)[Graffiti Remover SYS](#)[Graffiti Remover](#)[Towels](#)[Graffiti Remover Gel](#)[Graffiti Remover Spray](#)▶ [Mold Proof Products](#)▶ [Industrial Vehicle Protective Coatings](#)▶ [Construction Chemical & Form Accessories](#)**SEI Graffiti Proofer™**

The SEI Graffiti Proofer is a penetrating, permanent weatherproofing and Graffiti Proofing treatment. The SEI Graffiti Proofer shows no deterioration from ultraviolet rays, ozone, salt spray or acid rain. SEI Graffiti Proofer allows for expansion, contraction, building movement and temperature extremes. The SEI Graffiti Proofer will allow moisture vapor to escape while not allowing moisture to enter the structure. This product is non-toxic, non-flammable, environmentally friendly, non-reactive and Personal Protection has been rated as a B.



The SEI Graffiti Proofer works in tandem with the SEI Graffiti Remover S.Y.S.

**The SEI Graffiti Remover S.Y.S:**

- ❖ utilizes the SEI Migratory Technology that penetrates and chemically fractures the molecular bonds in paints, lacquers, enamels and stains.
- ❖ active ingredient migrates and penetrates paints, coatings or unwanted marks and creates molecular space between the vandalism and the substrate, making the removal easy from any surface protected with the SEI Graffiti Proofer.
- ❖ has no chemical, physical, mechanical or esthetic affects on the SEI Graffiti Proofer. The raw materials selected for the SEI Graffiti Remover S.Y.S were chosen because of their ability to not react with the SEI Graffiti Proofer, but have the ability to migrate and fracture the molecular bonds of various paints and coatings making graffiti removal easy.

**Graffiti Proofer Product Data Sheet.**

**Graffiti Proofer MSDS.** (Password protected)

(You will need Adobe's free [Acrobat Reader](#) to view).



**SEI Graffiti Proofer & Concrete Curing Agent™**

The SEI Graffiti Proofer & Concrete Curing Agent is a penetrating, permanent weatherproofing and Graffiti Proofing treatment. The SEI Graffiti Proofer & Concrete Curing Agent is a certified and accredited concrete curing agent as specified by ASTM standards. The SEI Graffiti Proofer & Concrete Curing Agent shows no deterioration from ultraviolet rays, ozone, salt spray or acid rain. SEI Graffiti Proofer allows for expansion, contraction, building movement and temperature extremes. The SEI Graffiti Proofer will allow moisture vapor to escape while not allowing moisture to enter the structure. This product is non-toxic, environmentally friendly, non-reactive and Personal Protection has been rated as a B.

▶ **Corrosion Proof Products**▼ **Graffiti Products**[Graffiti Proofer](#)[Graffiti & Concrete](#)[Curing Agent](#)[Graffiti Remover SYS](#)[Graffiti Remover](#)[Towels](#)[Graffiti Remover Gel](#)[Graffiti Remover Spray](#)▶ **Mold Proof Products**▶ **Industrial Vehicle Protective Coatings**▶ **Construction Chemical & Form Accessories**

The SEI Graffiti Proofer & Concrete Curing Agent works in tandem with the SEI Graffiti Remover S.Y.S.

**The SEI Graffiti Remover S.Y.S:**

- ❖ utilizes the SEI Migratory Technology that penetrates and chemically fractures the molecular bonds in paints, lacquers, enamels and stains.
- ❖ active ingredient migrates and penetrates paints, coatings or unwanted marks and creates molecular space between the vandalism and the substrate, making the removal easy from any surface protected with the SEI Graffiti Proofer & Concrete Curing Agent.
- ❖ has no chemical, physical, mechanical or esthetic affects on the SEI Graffiti Proofer & Concrete Curing Agent.

The raw materials selected for the SEI Graffiti Remover S.Y.S were chosen because of their ability to not react with the SEI Graffiti Proofer & Concrete Curing Agent, but have the ability to migrate and fracture the molecular bonds of various paints and coatings making graffiti removal easy.

**Curing Agent Product Data Sheet .****Curing Agent MSDS.** (Password protected)(You will need Adobe's free [Acrobat Reader](#) to view).



**SEI Graffiti Remover SYS™**

The SEI Graffiti Remover SYS utilizes SEI Migratory Technology that penetrates and chemically fractures the molecular bonds in paints, lacquers, enamels and stains from any surface that has been protected with the SEI Graffiti Proofer or the SEI Graffiti Proofer & Concrete Curing Agent.

▶ **Corrosion Proof Products**▼ **Graffiti Products**[Graffiti Proofer](#)[Graffiti & Concrete](#)[Curing Agent](#)[Graffiti Remover SYS](#)[Graffiti Remover](#)[Towels](#)[Graffiti Remover Gel](#)[Graffiti Remover Spray](#)▶ **Mold Proof Products**▶ **Industrial Vehicle Protective Coatings**▶ **Construction Chemical & Form Accessories**

The SEI Graffiti Remover SYS migrates, penetrates and chemically splits the molecular bonds of the paint or unwanted marks and creates molecular space between the vandalism and the SEI Graffiti Proofer making the removal quite easy. The SEI Graffiti Remover has no chemical, physical or esthetic affect on the SEI Graffiti Proofer or the SEI Graffiti Proofer and Concrete Curing Agent. The formula was designed for maximum consumer safety and therefore does not contain methylene chloride, chlorinated solvents, methanol, toluene, acetone, etc. Graffiti removal time varies from 30 seconds to 4 minutes, depending on the type of paint/coating and number of coatings to be removed. The SEI Graffiti Remover SYS is formulated as a semi-viscous gel for special applications like vertical surfaces or surfaces of complex geometry.

**The SEI Graffiti Remover SYS:**

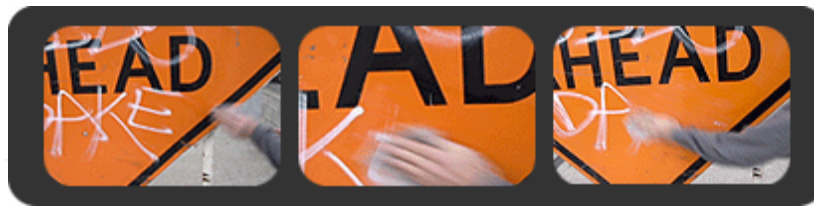
- ❖ is not regulated by the Department of Transportation.
- ❖ exempt from Rule 422 (photo chemically non-reactive).
- ❖ is exempt from Rule 1171 - AQMD Air Pollution Specifications.
- ❖ can be stored indoors without restrictions.
- ❖ is a multi-purpose formulation and is effective on all different types of paints, lacquers, enamels, waxes and stains.

**Remover SYS Product Data Sheet.****Remover SYS MSDS.** (Password protected)(You will need Adobe's free [Acrobat Reader](#) to view).



**SEI Graffiti Remover Towels™**

The SEI Graffiti Remover Towels utilize the SEI Migratory Technology that penetrates and chemically fractures the molecular bonds in paints, lacquers, enamels and stains from any non-porous surface. The SEI Graffiti Remover Towels active ingredient migrates, penetrates and splits the chemical bonds in the graffiti, unwanted paints or marks and creates space between the vandalism and the substrate making the removal quite easy. The formula was designed for maximum consumer safety and therefore does not contain methylene chloride, chlorinated solvents, methanol, toluene, acetone, etc. The removal time varies from 30 seconds to 2 minutes, depending on the type of coating and number of coatings to be removed.



The SEI Graffiti Remover Towels are formulated by impregnating SEI Migratory Technology molecules into a towel. All SEI Graffiti Removers have a unique combination of vapor and contact inhibiting abilities to prevent corrosion, flash rusting and discoloration of stainless steel, iron, copper, aluminum and brass after paint removal.

**The SEI Graffiti Remover Towels:**

- ❖ are also used for multi-purpose cleaning. They are effective on all different types of paints, lacquers, enamels, waxes, dirt, grit, grease etc.
- ❖ has a relatively low odour and is not regulated by the Department of Transportation.
- ❖ is exempt from Rule 422 (photo chemically non-reactive).
- ❖ is exempt from Rule 1171 - AQMD Air Pollution Specifications
- ❖ can be stored indoors without restrictions.

**Remover Towels Product Data Sheet.**

**Remover Towels MSDS.** (Password protected)

(You will need Adobe's free [Acrobat Reader](#) to view).

**SEI Graffiti Remover Gel™**

The SEI Graffiti Remover Gel utilizes the SEI Migratory Technology that penetrates and chemically fractures the molecular bonds in paints, lacquers, enamels and stains. This formulation creates a loose end substance that can be removed by a flushing of water or by the use of a brush or rag. The formula was designed for maximum consumer safety and therefore does not contain methylene chloride, chlorinated solvents, methanol, toluene, acetone, etc. Unlike methylene chloride based products that evaporate quickly, The SEI Graffiti Remover Gel migrates and penetrates the paint or unwanted marks and creates space between the vandalism and the substrate making the removal quite easy. The stripping time varies from three minutes and sixty minutes, depending on the type of coating and the number of coatings to be removed.

▶ **Corrosion Proof Products**▼ **Graffiti Products**[Graffiti Proofer](#)[Graffiti & Concrete](#)[Curing Agent](#)[Graffiti Remover SYS](#)[Graffiti Remover](#)[Towels](#)[Graffiti Remover Gel](#)[Graffiti Remover Spray](#)▶ **Mold Proof Products**▶ **Industrial Vehicle Protective Coatings**▶ **Construction Chemical & Form Accessories****The SEI Graffiti Remover Gel:**

- ❖ was formulated as a thixotropic gel for special applications that require the chemical to cling to vertical surfaces or surfaces of complex geometry.
- ❖ has a relatively low odour and is not regulated by the Department of Transportation.
- ❖ exempt from Rule 422 (photo chemically non-reactive).
- ❖ is exempt from Rule 1171 - AQMD Air Pollution Specifications
- ❖ can be stored indoors without restrictions.
- ❖ has a unique combination of vapour and contact inhibiting abilities to prevent corrosion, flash rusting and discoloration of stainless steel, iron, copper, aluminum and brass after paint removal.
- ❖ is a multi-purpose formulation and is effective on different types of paints, lacquers, enamels, waxes, etc.

**Remover Gel Product Data Sheet.****Remover Gel MSDS.** (Password protected)(You will need Adobe's free [Acrobat Reader](#) to view).





▶ [Corrosion Proof Products](#)

▼ [Graffiti Products](#)

[Graffiti Proofer](#)

[Graffiti & Concrete](#)

[Curing Agent](#)

[Graffiti Remover SYS](#)

[Graffiti Remover](#)

[Towels](#)

[Graffiti Remover Gel](#)

[Graffiti Remover Spray](#)

▶ [Mold Proof Products](#)

▶ [Industrial Vehicle Protective Coatings](#)

▶ [Construction Chemical & Form Accessories](#)

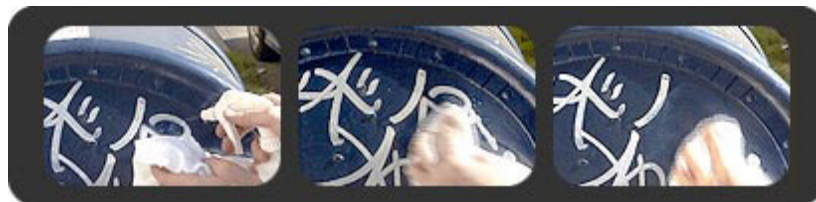
## SEI Graffiti Remover Spray™

The SEI Graffiti Remover Spray is a utilize the SEI Migratory Technology that penetrates and chemically fractures the molecular bonds in paints, lacquers, enamels and stains. This formulation creates a loose end substance that can be removed by a flushing of water or by the use of a brush or rag. The formula was designed for maximum consumer safety and therefore does not contain methylene chloride, chlorinated solvents, methanol, toluene, acetone, etc. Unlike methylene chloride based products that evaporate quickly, The SEI Graffiti Remover Spray migrates and penetrates the paint or unwanted marks and creates space between the vandalism and the substrate making the removal quite easy. The stripping time varies from three minutes and sixty minutes, depending on the type of coating and number of coatings to be removed.



### The SEI Graffiti Remover Spray:

- ❖ was formulated as a thixotropic Spray for special applications that require the chemical to cling to vertical surfaces or surfaces of complex geometry.
- ❖ has a relatively low odor and is not regulated by the Department of Transportation.
- ❖ exempt from Rule 422 (photochemically non-reactive).
- ❖ is exempt from Rule 1171 - AQMD Air Pollution Specifications
- ❖ can be stored indoors without restrictions.
- ❖ has a unique combination of vapor and contact inhibiting abilities to prevent corrosion, flash rusting and discoloration of stainless steel, iron, copper, aluminum and brass after paint removal.
- ❖ is a multi-purpose formulation and is effective on different types of paints, lacquers, enamels, waxes, etc.



[Remove Spray Product Data Sheet.](#)

[Remove Spray MSDS.](#) (Password protected)

(You will need Adobe's free [Acrobat Reader](#) to view).




[home](#)
[technology](#)
[products](#)
[research & development](#)
[private label](#)
[about us](#)
[contact us](#)
**Pr**

04 02

## Products

### SEI Mold Proofer™

This product can be applied to walls, ceilings, sub floors, ductwork, wood, dimensioned lumber, particle board & OSB, drywall, etc. It is used as a primer over contaminated surfaces to kill microbial growth, hide stains, encapsulate all odors and permanently inhibit re-growth.

[▶ Corrosion Proof Products](#)
[▶ Graffiti Products](#)
[▼ Mold Proof Products](#)
[SEI Mold Proofer](#)
[SEI Mold Cleaner](#)
[▶ Industrial Vehicle  
Protective Coatings](#)
[▶ Construction Chemical &  
Form Accessories](#)

(C) Copyright. SEI Group. 2002. [Home](#) | [Technology](#) | [Products](#) | [R & D](#) | [Private Labels](#) | [About Us](#) | [Contact Us](#)


[home](#)
[technology](#)
[products](#)
[research & development](#)
[private label](#)
**SEI™** ADVANCED CHEMICAL TECHNOLOGY™

## Pr Products

### SEI Mold Cleaner™

SEI Mold Cleaner is a water-based disinfectant and is an excellent product for removing and controlling the growth of algae, fungus, bacteria & mold. This product is blended in a 1:1 ratio with water and is simply sprayed on to the surface using a low pressure sprayer. Allow to soak for approximately 8 hours before cleaning the surface. SEI Mold Cleaner is a water based, soluble disinfectant used to kill mold, algae, fungus or moss. It is environmentally friendly and biodegradable. It is suitable for use on concrete, wood, metal, fiber-glass or painted surfaces. It can help alleviate mold and mildew in areas such as duct work, refrigerated food storage areas, fish and poultry processing facilities, public washrooms, marine vessels, public fountains, historical monuments, building facades, high humidity areas etc.

This product is approved by Danish Ministry for Food Processing, Agriculture and Fish Industries. The coverage rate of SEI Mold Cleaner is approximately 400-1200 ft/US gallon.

[▶ Corrosion Proof Products](#)
[▶ Graffiti Products](#)
[▼ Mold Proof Products](#)
[SEI Mold Proofer](#)
[SEI Mold Cleaner](#)
[▶ Industrial Vehicle Protective Coatings](#)
[▶ Construction Chemical & Form Accessories](#)

(C) Copyright. SEI Group. 2002. [Home](#) | [Technology](#) | [Products](#) | [R & D](#) | [Private Labels](#) | [About Us](#) | [Contact Us](#)


[home](#)
[technology](#)
[products](#)
[research & development](#)
[private label](#)
**SEI™** ADVANCED CHEMICAL TECHNOLOGY™

Pr

04 02

## Products

### Industrial Vehicle Protective Coatings

A wide variety of industries rely on their vehicle's coatings to protect the vehicle itself from deterioration. Corporations with fleets want their vehicles to portray a specific esthetic appearance and the vehicles must be easy to clean and maintain without the use of environmentally destructive cleaning products that damage the vehicles finish and surrounding parts.

At SEI Chemical, our Industrial Vehicle Coatings will simply save you time and money, while minimizing maintenance and downtime allowing you to spend your dollars and efforts on your business.

[▶ Corrosion Proof Products](#)
[▶ Graffiti Products](#)
[▶ Mold Proof Products](#)
[▼ Industrial Vehicle Protective Coatings](#)
[SEI Exterior Vehicle](#)
[Protector™](#)
[SEI Interior ehicle](#)
[Protector™](#)
[▶ Construction Chemical & Form Accessories](#)

(C) Copyright. SEI Group. 2002. [Home](#) | [Technology](#) | [Products](#) | [R & D](#) | [Private Labels](#) | [About Us](#) | [Contact Us](#)

### SEI Exterior Vehicle Protector™

This coating is a leading-edge, highly fluorinated extremely durable elastomer that exhibits tremendous high-slip characteristics and has high chemical resistance. This product exhibits outstanding anti-stick, long-lasting performance properties. The fluorinated polymer makes this coating impervious to UV degradation, cement paste, concrete, tar, adhesives, oils, greases, hydrocarbons, chlorides, acids, graffiti and is extremely abrasion resistant.

This coating exhibits outstanding weathering characteristics and is ideal for limited immersion service on marine, aerospace, architectural, construction, industrial and automotive equipment. It provides a high quality finish, and offers world-class performance with an expected life span exceeding 30 years. Use on ferrous and non-ferrous metals, masonry, concrete, brick, stone, wood, fiberglass, carbon fiber, etc.

- Outstanding Hydrophobic and Oleophobic surface properties
- Highly flexible and outstanding impact and abrasion resistance
- Low surface energy and high slip characteristics
- Highly resistant to attack by chemicals and abrasion
- Completely insensitive to UV radiation
- Meets all US Military industrial coating specifications

▶ [Corrosion Proof Products](#)

▶ [Graffiti Products](#)

▶ [Mold Proof Products](#)

▼ [Industrial Vehicle Protective Coatings](#)

[SEI Exterior Vehicle Protector™](#)

[SEI Interior ehicle Protector™](#)

[SEI Interior ehicle Protector™](#)

▶ [Construction Chemical & Form Accessories](#)


[home](#)
[technology](#)
[products](#)
[research & development](#)
[private label](#)
**SEI™** ADVANCED CHEMICAL TECHNOLOGY™

## Pr Products

### SEI Interior Vehicle Protector™

This coating was initially designed for the protection of interior of mixers on redi-mix concrete trucks. Applications for this product have extended to concrete plants, heavy construction equipment, mining truck bed-liners and industrial conveyer chute used in the oil and gas and mining industries.

This coatings raw material is remarkably tough, resilient and flexible. This coating is applied by using an airless-spray at ambient temperatures. This is a one application product, even on vertical or inverted surfaces. It contains no solvents whatsoever and there are unlimited film build capabilities.

This coating encapsulates rivets, bolts, edges and rough welds in one coat and produces a high film thicknesses needed to provide monolithic protection over naturally rough concrete surfaces. This coating is VOC and AQMD complaint. They are odorless during and after application. They are dense membranes and very elastic able to withstand a phenomenal amount of abrasion and impact.

[▶ Corrosion Proof Products](#)
[▶ Graffiti Products](#)
[▶ Mold Proof Products](#)
[▼ Industrial Vehicle Protective Coatings](#)
[SEI Exterior Vehicle](#)
[Protector™](#)
[SEI Interior ehicle](#)
[Protector™](#)
[▶ Construction Chemical & Form Accessories](#)

(C) Copyright. SEI Group. 2002. [Home](#) | [Technology](#) | [Products](#) | [R & D](#) | [Private Labels](#) | [About Us](#) | [Contact Us](#)



## Construction Chemicals & Form Accessories

SEI Chemical supplies a tremendous amount of chemicals to some of the largest engineering construction contractors in the world. In order to fulfill demand SEI has entered into a private label reseller agreement with the most respected construction chemical and form accessory manufacturer in the world. SEI Chemical provides onsite delivery to job sites scattered all over North America. Our onsite engineers are here to help you design your specifications and streamline your purchasing.

### Construction Chemicals:

- Concrete Form Treatment
- Curing Compounds
- Bond Breakers
- Liquid Bonding Agents
- Epoxy Construction Adhesives
- Protective Sealers
- Epoxy Coatings
- Liquid Hardeners
- Urethane Caulking
- Textured Coating
- Polyureas
- Repair Products/Patches
- Grouts & Anchoring Cements
- Floor Levelers & Shake-On Hardeners
- Retarders and Accelerators
- Joint Material and Crackfiller
- Cleaners and Strippers

SEI Chemical  
**PRODUCT DATA SHEET**  
SEI GRAFFITI REMOVER SPRAY

---

**Product Description:**

The SEI Graffiti Remover Spray utilizes the SEI Migratory Technology that penetrates and chemically fractures the molecular bonds in paints, lacquers, enamels and stains. The SEI Graffiti Remover Sprays active ingredient migrates and penetrates paints, coatings or unwanted marks and creates molecular space between the vandalism and the substrate, making the removal easy. The formula was designed for maximum consumer safety and therefore does not contain methylene chloride, chlorinated solvents, methanol, toluene, acetone, etc. All SEI Graffiti Removers have a unique combination of vapor and contact inhibiting abilities to prevent corrosion, flash rusting and discoloration of stainless steel, iron, copper, aluminum and brass after paint removal.

This Spray formulation creates a loose end substance that can be removed by a flushing of water or by the use of a brush or rag. The stripping time varies from three minutes and sixty minutes, depending on the type of coating and number of coatings to be removed.

The SEI Graffiti Remover Spray was formulated as a non-viscous liquid for applications that require the chemical to be sprayed from a nozzle. The SEI Graffiti Remover Spray is a multi-purpose formulation and is effective on different types of paints, coatings, lacquers, enamels, waxes, etc.

**Typical Uses:**

Use on any surface.

SEI Chemical  
**PRODUCT DATA SHEET**  
SEI GRAFFITI REMOVER SPRAY

---

**Chief Advantages:**

- Relatively low odor.
- Not regulated by the Department of Transportation.
- Exempt from Rule 422 (photochemically non-reactive).
- Exempt from Rule 1171 - AQMD.
- Can be stored indoors without restrictions.

**Packaging:**

- 12oz and 24 oz Aerosol or trigger spray bottles.
- Custom sizes available.

**Method of Application:**

The SEI Graffiti Remover Spray should be applied in full strength. Under ambient conditions, the use of a brush or water spray can be used. Sufficient time (between three and thirty minutes) should be allowed for the product to migrate and penetrate the coating. Loose substrate may be scraped or washed with water. If sanding and refinishing is used, the surface should be allowed to dry. If desired, The SEI Graffiti Remover Spray may be applied in full strength using a pressure washer.

\*NOTE: This product must be shaken or stirred before use.

SEI Chemical  
**PRODUCT DATA SHEET**  
SEI GRAFFITI REMOVER GEL

---

**Product Description:**

The SEI Graffiti Remover Gel utilizes the SEI Migratory Technology that penetrates and chemically fractures the molecular bonds in paints, lacquers, enamels and stains. The SEI Graffiti Remover Gels active ingredient migrates and penetrates paints, coatings or unwanted marks and creates molecular space between the vandalism and the substrate, making the removal easy. The formula was designed for maximum consumer safety and therefore does not contain methylene chloride, chlorinated solvents, methanol, toluene, acetone, etc. All SEI Graffiti Removers have a unique combination of vapor and contact inhibiting abilities to prevent corrosion, flash rusting and discoloration of stainless steel, iron, copper, aluminum and brass after paint removal.

This Gel formulation creates a loose end substance that can be removed by a flushing of water or by the use of a brush or rag. The stripping time varies from three minutes and sixty minutes, depending on the type of coating and number of coatings to be removed.

The SEI Graffiti Remover Gel was formulated as a thixotropic gel for special applications that require the chemical to cling to vertical, horizontal or surfaces of complex geometry. The SEI Graffiti Remover Gel is a multi-purpose formulation and is effective on different types of paints, coatings, lacquers, enamels, waxes, etc.

**Typical Uses:**

Any porous material: Concrete, wood, stucco, brick, stone, masonry, vinyl, canvas, etc.

SEI Chemical  
**PRODUCT DATA SHEET**  
SEI GRAFFITI REMOVER GEL

---

**Chief Advantages:**

- Not regulated by the Department of Transportation.
- Relatively low odor.
- Exempt from Rule 422 (photochemically non-reactive)
- Non-corrosive.
- Can be stored indoors without restrictions.
- Exempt from Rule 1171 - AQMD

**Packaging:**

- 5, 55 - gal Container.
- Any size custom packaging available

**Method of Application:**

The SEI Graffiti Remover Gel should be applied in full strength. Under ambient conditions, the use of a brush or warm water spray is recommended. Sufficient time (between three and sixty minutes) should be allowed for the product to migrate and penetrate the vandalism. Loose substrate may be scraped or washed away with water. If sanding and refinishing is used, the surface should be allowed to dry. If desired

The SEI Graffiti Remover Gel may be applied in full strength using an airless sprayer.

**\*NOTE:** This product must be shaken or stirred before use.

SEI Chemical  
**PRODUCT DATA SHEET**  
SEI GRAFFITI REMOVER TOWELS

---

**Product Description:**

The SEI Graffiti Remover Towels utilize the SEI Migratory Technology that penetrates and chemically fractures the molecular bonds in paints, lacquers, enamels and stains. The SEI Graffiti Remover Towels active ingredient migrates and penetrates paints, coatings or unwanted marks and creates molecular space between the vandalism and the substrate, making the removal easy. The formula was designed for maximum consumer safety and therefore does not contain methylene chloride, chlorinated solvents, methanol, toluene, acetone, etc. The removal time varies from thirty seconds minutes to four minutes, depending on the type of coating and number of coatings to be removed.

The SEI Graffiti Remover Towels are formulated by impregnating SEI Migratory Technology molecules into a towelet. All SEI Graffiti Removers have a unique combination of vapor and contact inhibiting abilities to prevent corrosion, flash rusting and discoloration of stainless steel, iron, copper, aluminum and brass after paint removal.

OPP TECH Graffiti Remover Towels are also used for multi-purpose cleaning. They are effective on different types of paints, lacquers, enamels, waxes, dirt, grit, grease etc.

**Chief Advantages:**

- Relatively low odor.
- Not regulated by the Department of Transportation.
- Exempt from Rule 422 (photochemically non-reactive).
- Exempt from Rule 1171 - AQMD
- Can be stored indoors without restrictions.

SEI Chemical  
**PRODUCT DATA SHEET**  
SEI GRAFFITI REMOVER TOWELS

---

**Packaging:**

- Container contains 12 or 40 Towels.
- Custom packaging available.

**Method of Application:**

The SEI Graffiti Remover Towels can be used on any surface and are pulled from the container and used directly on any unwanted vandalism or any area that needs to be cleaned.

- Unfold a towel and blot graffitied area, let stand 20 to 40 seconds.
- Lightly scrub in a circular motion to begin to remove graffiti.
- Wipe up any remaining residue with a clean cloth.
- A clean damp cloth can be used to neutralize active ingredients from working on delicate surfaces.

SEI Chemical  
**PRODUCT DATA SHEET**  
SEI GRAFFITI REMOVER S.Y.S

---

**Product Description:**

The SEI Graffiti Remover S.Y.S utilizes the SEI Migratory Technology that penetrates and chemically fractures the molecular bonds in paints, lacquers, enamels and stains. The SEI Graffiti Remover Sprays active ingredient migrates and penetrates paints, coatings or unwanted marks and creates molecular space between the vandalism and the substrate, making the removal easy from any surface that has been protected with the SEI Graffiti Proofer®. The SEI Graffiti Remover S.Y.S has no chemical, physical, mechanical or esthetic effects on the SEI Graffiti Proofer®. The formula was designed for maximum consumer safety and therefore does not contain methylene chloride, chlorinated solvents, methanol, toluene, acetone, etc. The stripping time varies from thirty seconds to four minutes, depending on the type of coating and number of coatings to be removed. The SEI Graffiti Remover S.Y.S was formulated as a semi-viscous product for applications on vertical, horizontal or surfaces of complex geometry. The SEI Graffiti Remover S.Y.S is a multi-purpose formulation and is effective on different types of paints, coatings, lacquers, enamels, waxes and stains but has no effect on the SEI Graffiti Proofer®.

**Typical Uses:**

Use on any structure that has been protected with the SEI Graffiti Proofer®.



SEI Chemical  
**PRODUCT DATA SHEET**  
SEI GRAFFITI REMOVER S.Y.S

---

**Chief Advantages:**

- Relatively low odor.
- Not regulated by the Department of Transportation.
- Exempt from Rule 422 (photochemically non-reactive).
- Exempt from Rule 1171 - AQMD
- Can be stored indoors without restrictions.

**Packaging:**

- 12oz., 24oz. Aerosol
- Custom packaging available

**Method of Application:**

The SEI Graffiti Remover S.Y.S should be applied in full strength. Under ambient conditions, the use of a brush and/or water spray is recommended. Sufficient time (between thirty seconds and four minutes) should be allowed for the product to migrate and penetrate the graffiti. Loose substrate may be scraped or washed with water. If sanding and refinishing is used, the surface should be allowed to dry.

\*NOTE: This product must be shaken or stirred before use.

SEI Chemical  
**PRODUCT DATA SHEET**  
SEI GRAFFITI PROOFER® & CURING AGENT

---

**Product Description:**

- May be used on green concrete.
- Allows expansion and contraction.
- Is a certified and accredited Concrete Curing Agent as specified by ASTM standards.
- Can be applied to horizontal, vertical and wear surfaces.
- Not affected by temperatures between -57.120C (-700F) to +206.08'C (+4000F).

**Composition & Materials:**

The SEI Graffiti Proofer ® and Curing Agent is a professional, penetrating, permanent weatherproofing, graffiti proofing and curing agent treatment. This product has been tested in all climates. No deterioration from ultraviolet rays, ozone, salt spray, acid rain, etc.

The SEI Graffiti Proofer ® and Curing Agent allows for expansion, contraction, building movement, temperature extremes, etc.

The SEI Graffiti Proofer ® and Curing Agent will allow moisture-vapor to escape while not allowing moisture to enter the structure. This product is non-toxic, environmentally friendly, non-reactive and Personal Protection has been rated as a B.

**Limitations:**

Product application must not be initiated during inclement weather or when precipitation appears imminent.

Product must not be applied to wet, frozen or dirty surfaces.

Product must not be applied over refrigerated tanks or buildings where a vapor barrier coating is required.

Product must be checked and reapplied as needed in the specific area that has undergone an extreme pressure washing (over 2000 psi), sandblasting or soda blasting.

Equipment and methods used in application of product must be in accordance with manufacturers instructions and specifications.

SEI Chemical  
**PRODUCT DATA SHEET**  
SEI GRAFFITI PROOFER® & CURING AGENT

---

Application Guidelines:

**SURFACE PREPARATION:**

- A. The surface is to be cleaned and free of any foreign matter.
- B. The product may be applied at any normal temperature as long as there is no frozen moisture in the substrate. It must be applied to a dry surface.

**APPLICATION:**

- A. Apply your first application of the product with an airless sprayer. Use a flood coat and apply liberally.
- B. Allow 24 hours for the first coat of the SEI Graffiti Proofer ® and Curing Agent to cure the structure, so the second coat can be applied.
- C. Apply a second coat 24 hours after the first coat. If a and third coating is desired dry time after the second coat will be approximately 2.5 hours on a green structure.

**GRAFFITI:**

- A. Remove graffiti as soon as possible after surface has been sprayed.
- B. Success has been achieved by a spraying of the SEI Graffiti Remover S.Y.S followed by a water washing or use of a rag depending on scenario. See SEI Graffiti Remover S.Y.S Product Data.

SEI Chemical  
**PRODUCT DATA SHEET**  
SEI GRAFFITI PROOFER® & CURING AGENT

---

**Recommendations:**

1. SEI Graffiti Proofer ® and Curing Agent should be accepted as an anti-graffitant.
2. SEI Graffiti Proofer ® and Curing Agent should be used as an anti-graffitant on all new/green structures subjected to or considered to be targeted for graffiti.
3. The initial application of the SEI Graffiti Proofer ® and Curing Agent should be a base application for cure purposes, then, another application is necessary to complete the graffiti proofing coating system.
4. The surface must be clean and dry. Apply liberally to surface.
5. A continuing record should be kept of areas cleaned and protected, noting all cycles attained.
6. Graffiti must be removed with the SEI Graffiti Remover S.Y.S followed by a water washing or use of a rag depending on scenario. See SEI Graffiti Remover S.Y.S Product Data. By using other paint strippers, one may dramatically decrease the number of cleaning cycles, void warranty and potentially ruin the SEI Graffiti Proofer ® and Curing Agent. The number of cleaning cycles depends on many factors, including type of graffiti and porosity of substrate.
7. The SEI Graffiti Proofer ® and Curing Agent is a certified and accredited Concrete Curing Agent as specified by ASTM Standards.

**SEI Chemical**  
**PRODUCT DATA SHEET**

SEI GRAFFITI PROOFER® & CURING AGENT

---

**Limited Warranty:**

SEI Chemical warrants this product to be free from defects.

SEI Chemical makes no other warranties with respect to this product, express or implied, including without limitation the implied warranties of MERCHANTABILITY OR FITNESS FOR PARTICULAR PURPOSE. SEI Chemicals liability shall be limited in all events to supplying sufficient product to retreat the specific areas to which defective product has been applied. SEI Chemical shall have no other liability, including liability for incidental or resultant damages, whether due to breach of warranty or negligence. This warranty may not be modified by applicators, representatives of SEI Chemical its affiliates.

**Technical Services:**

Complete technical services and samples are available from SEI Chemical Inc. and its manufacturer's affiliates. Service includes assistance in engineering, design, specification, and application. SEI Graffiti Proofer® and Curing Agent may be used on concrete. SEI Graffiti Proofer® and Curing Agent is designed for above grade application.

**ESTIMATED COVERAGE:**

TYPE OF SURFACE	SQUARE METERS	SQUARE FEET
	Per 3.785 Liters	Per Gallon
Exterior Brick	11.6-13.9	175-225
Concrete	9.2-18.5	200-300
Concrete Block	7.4-11.1	100-175
Stucco	11.6-18.5	175-250
Smooth Stone	13.9-18.5	175-250
Surfaces subject to abrasion (decks bridges, etc.)	9.2-13.9	100-150
Rough Wood	6.9-18.5	75-200
Smooth Wood	13.9-18.5	150-200
Wood Shingles	6.9-11.6	100-150

SEI Chemical  
**PRODUCT DATA SHEET**  
SEI GRAFFITI PROOFER®

---

**Product Description:**

- May be used on canvas, concrete, masonry, stone, stucco, brick, block, wood and other porous materials.
- Allows expansion and contraction.
- Can be applied to horizontal, vertical and wear surfaces.
- Not affected by temperatures between -57.120C (-700F) to +206.08'C (+4000F).

**Composition & Materials:**

The SEI Graffiti Proofer ® is a professional, penetrating, permanent weatherproofing and Graffiti Proofing treatment. This product has been tested in all climates. No deterioration from ultraviolet rays, ozone, salt spray, acid rain, etc.

The SEI Graffiti Proofer ® allows for expansion, contraction, building movement, temperature extremes, etc.

The SEI Graffiti Proofer ® will allow moisture-vapor to escape while not allowing moisture to enter the structure. This product is non-toxic, environmentally friendly, non-reactive and Personal Protection has been rated as a B.

**Limitations:**

Product application must not be initiated during inclement weather or when precipitation appears imminent.

Product must not be applied to wet, frozen or dirty surfaces.

Product must not be applied over refrigerated tanks or buildings where a vapor barrier coating is required.

Product must be checked and reapplied as needed in the specific area that has undergone an extreme pressure washing (over 2500 psi), sandblasting or soda blasting.

Equipment and methods used in application of product must be in accordance with manufacturers instructions and specifications.

SEI Chemical  
**PRODUCT DATA SHEET**  
SEI GRAFFITI PROOFER®

---

**Application Guidelines:**

**SURFACE PREPARATION:**

- A. The surface must be cleaned and free of any foreign matter. This is accomplished with a pressure washer and then must completely dry.
- B. If surface has graffiti, this must be removed with one of the appropriate SEI Graffiti Removers.
- C. The product may be applied at any normal temperature as long as there is no frozen moisture in the substrate. It should be applied to a dry surface.
- D. If new green walls have been poured and there is no foreign material on the walls then pressure washing before application is not necessarily required, but the walls must be cured before application of the SEI Graffiti Proofer ®.

**APPLICATION:**

- A. Apply your first application of the product with brush, roller, or sprayer. Use a flood coat or apply liberally with brush or roller.
- B. Drying time between applications is approximately forty-five minutes depending on weather. This time increases in cold weather and can be up to 2.5 hours, when the temperature is below 20°F.
- C. Apply a second and third coating (if needed) once the first is dry for extra-added protection, check the Industrial Coverage Chart.

**GRAFFITI:**

- A. Remove graffiti as soon as possible after surface has been sprayed.
- B. Success has been achieved by a spraying of the SEI Graffiti Remover S.Y.S followed by a water washing or use of a rag depending on scenario. See SEI Graffiti Remover S.Y.S Product Data.

SEI Chemical  
**PRODUCT DATA SHEET**  
SEI GRAFFITI PROOFER®

---

**Recommendations:**

1. SEI Graffiti Proofer ® should be accepted as an anti-graffitant.
2. SEI Graffiti Proofer ® should be used as an anti-graffitant on both new and existing areas subjected to or considered to be targeted for graffiti.
3. The application of the SEI Graffiti Proofer ® should be a base application, then, when dry, another application is necessary to complete the graffiti proofing coating system.
4. The surface must be clean and dry. Apply liberally to surface.
5. A continuing record should be kept of areas cleaned and protected, noting all cycles attained.
6. Graffiti must be removed with the SEI Graffiti Remover S.Y.S followed by a water washing or use of a rag depending on scenario. See SEI Graffiti Remover S.Y.S Product Data. By using other paint strippers, one may dramatically decrease the number of cleaning cycles, void warranty and potentially ruin the SEI Graffiti Proofer ®. The number of cleaning cycles depends on many factors, including type of graffiti and porosity of substrate.

**Limited Warranty:**

SEI Chemical warrants this product to be free from defects.

SEI Chemical makes no other warranties with respect to this product, express or implied, including without limitation the implied warranties of MERCHANTABILITY OR FITNESS FOR PARTICULAR PURPOSE. SEI Chemicals liability shall be limited in all events to supplying sufficient product to retreat the specific areas to which defective product has been applied. SEI Chemical shall have no other liability, including liability for incidental or resultant damages, whether due to breach of warranty or negligence. This warranty may not be modified by applicators, representatives of SEI Chemical its affiliates.



**SEI Chemical**  
**PRODUCT DATA SHEET**  
SEI GRAFFITI PROOFER®

---

**Technical Services:**

Complete technical services and samples are available from SEI Chemical Inc. and its manufacturer's affiliates. Service includes assistance in engineering, design, specification, and application stages. SEI Graffiti Proofer® may be used on concrete, masonry, wood or other porous building materials. SEI Graffiti Proofer® is designed for above grade application.

**ESTIMATED COVERAGE:**

<b>TYPE OF SURFACE</b>	<b>SQUARE METERS</b>	<b>SQUARE FEET</b>
	<b>Per 3.785 Liters</b>	<b>Per Gallon</b>
Exterior Brick	11.6-13.9	175-225
Concrete	9.2-18.5	200-300
Concrete Block	7.4-11.1	100-175
Stucco	11.6-18.5	175-250
Smooth Stone	13.9-18.5	175-250
Surfaces subject to abrasion (decks bridges, etc.)	9.2-13.9	100-150
Rough Wood	6.9-18.5	75-200
Smooth Wood	13.9-18.5	150-200
Wood Shingles	6.9-11.6	100-150

# SEI Chemical

9005 West Sahara Avenue

Las Vegas, Nevada, 89117

Tel: 800 804 3978 Fax: 800 804 3975

---



## Sei CORROSION PROOF™ PLASTIC FILMS

### **Description**

The SEI Corrosion Proof Plastic Films utilize CPT™ Technology (Corrosion Preventative Technology). This is a highly charged and durable migrational molecule that has the ability to penetrate and travel through a wide variety of mediums in order to find and bond with all types of metal. The CPT molecule needs to fulfill its ionic attraction by bonding with either ferrous or non-ferrous metal. Once the CPT molecule has found metal it creates a highly durable, resilient and robust chemical bond. This bond provides extensive protection for long periods of time in very harsh environments. The SEI Corrosion Proof VCI Films combine leading edge film technology with the most environmental and effective corrosion prevention technology for all metals in industrial and high-tech electrical applications. SEI Corrosion Proof Films protects metals from all types of corrosion including rust, tarnish, stains, white rust and oxidation for up to 5 years. SEI Corrosion Proof Films and bags replace conventional rust preventatives such as oils and inefficient desiccants. SEI Corrosion Proof Films eliminates all the degreasing or coating removal required in the past. Your product can now be used immediately. SEI Corrosion Proof Films are transparent, making it easy to identify metals and parts. All SEI Corrosion Proof products do not contain amines, phosphates or nitrites. They are environmentally acceptable for use and are much safer than traditional anti-corrosion products. SEI Corrosion Proof Films, wraps, bags and anti-static bags are non-toxic and recyclable.

### **Properties**

SEI Corrosion Proof Films are extremely durable and have excellent puncture resistance and tear strength. SEI Corrosion Proof Films protect metal objects as small as a needle, as sensitive as a semi-conductor and as large as the contents of an oceangoing container. Metal parts packaged in SEI Corrosion Proof Films receive continuous protection against salt, excessive humidity, condensation, moisture, aggressive industrial atmospheres and dissimilar metal corrosion. The CPT molecules vaporize and then condense on all metal surfaces in the enclosed package. They reaches every area of your part, protecting its exterior as well as hard-to-reach interior surfaces. You get complete product protection during operation, storage as well as during domestic and overseas shipments, eliminating all corrosion for good.

# SEI Chemical

9005 West Sahara Avenue

Las Vegas, Nevada, 89117

Tel: 800 804 3978 Fax: 800 804 3975

---



## Metals Protected

- Aluminum
- Galvanized Steel
- Carbon Steels
- Silicon Steel
- Stainless Steel
- Silver
- Copper
- Solder
- Brass

## Sizes & Constructions

SEI Corrosion Proof Films are heat sealable and can be used with all types of manual or automated heat-seal packaging and equipment. The material is available in a variety of bags and sheeting-reinforced film, Zip-Lock and Auto-Bags, gusseted liners, bags-on-a-roll, perforated sheeting, stretch film, coil covers, shrink film and tubing- to protect small or large parts. Antistatic (ESD) and fire retardant (FR) varieties are available as well as coextruded constructions. SEI Corrosion Proof Films is available in a variety of gauges, ranging from 2 to 20 mils (50-500 microns) and widths from 2" to 50' (5.1 cm - 15 m). It conforms to military specifications, MIL-B-22019-C and MIL-B-22020-C

## Physical Properties

- [at 4 mils (100 microns)]
- PSI Bar Tensile Strength at break (PSI) 4511.7/4085.831108.2/28171.5
- Elongation at break (%) 878.3/872.9 6055.9/6018.7
- Tear Strength (GF) 3056.0/2933.021071.1/20223.
- Puncture Resistance (GF) 2554.0 17609.8

## Disclaimer

The information provided is to be used as a guide and customers should perform their own tests to ensure performance in their application. All data, statements, and recommendations made herein are based upon information we believe to be reliable, but are made without any representation, guarantee or warranty of accuracy.

All statements, technical information and recommendations contained herein are based on tests SEI Chemical believes to be reliable, but the accuracy or completeness thereof is not guaranteed. SEI Chemical warrants SEI products will be free from defects when shipped to customer. SEI In Chemical obligation under this warranty shall be limited to replacement of product that proves to be defective. To obtain replacement product under this warranty, the customer must notify SEI Chemical of the claimed defect within six months after shipment of product to customer. All freight charges for replacement products shall be paid by customer. SEI Chemical shall have no liability for any injury, loss or damage arising out of the use of or the inability to use the products. BEFORE USING, USER SHALL DETERMINE THE SUITABILITY OF THE PRODUCT FOR ITS INTENDED USE, AND USER ASSUMES ALL RISK AND LIABILITY WHATSOEVER IN CONNECTION THEREWITH. No representation or recommendation not contained herein shall have any force or effect unless in a written document signed by an officer of SEI Chemical. THE FOREGOING WARRANTY IS EXCLUSIVE AND IN LIEU OF ALL OTHER WARRANTIES, EXPRESS, IMPLIED OR STATUTORY, INCLUDING WITHOUT LIMITATION ANY IMPLIED WARRANTY OF MERCHANTABILITY OR OF FITNESS FOR A PARTICULAR PURPOSE. IN NO CASE SHALL SEI INDUSTRIAL PRODUCTS BE LIABLE FOR INCIDENTAL OR CONSEQUENTIAL DAMAGES. LIMITED WARRANTY, FOR INDUSTRIAL USE ONLY, KEEP OUT OF REACH OF CHILDREN, KEEP CONTAINER TIGHTLY CLOSED, NOT FOR INTERNAL CONSUMPTION, CONSULT MATERIAL SAFETY DATA SHEET FOR MORE INFORMATION.

# SEI Chemical

9005 West Sahara Avenue

Las Vegas, Nevada, 89117

Tel: 800 804 3978 Fax: 800 804 3975

---



## Sei CORROSION PROOF™ POWDER

### Product Description

The SEI Corrosion Proof Powder utilizes CPT™ Technology (Corrosion Preventative Technology). This is a highly charged and durable migrational molecule that has the ability to penetrate and travel through a wide variety of mediums in order to find and bond with all types of metal. The CPT molecule needs to fulfill its ionic attraction by bonding with either ferrous or non-ferrous metal. Once the CPT molecule has found metal it creates a highly durable, resilient and robust chemical bond. This bond provides extensive protection for long periods of time in very harsh environments. The SEI Corrosion Proof Powder is water-soluble and it contains the CPT corrosion-inhibiting molecule for wet or dry corrosion protection of all ferrous and non-ferrous metals including aluminum.

### Additional Features

- Provides monomolecular inhibiting layer
- For Dry Applications use approximately 0.5 ounces of Powder to protect up to 1.0 cubic foot
- For Aqueous Applications with average environmental conditions, use 2.5% to 3.5% SEI Corrosion Proof Powder by weight of water. The dosage can be increased for more severe conditions
- Provides up to 40 months of continuous protection
- Provides liquid, vapor and interface protection above and below liquid levels
- Creates a durable monomolecular inhibiting layer on metal surface
- Does not contain phosphates, nitrites or heavy metals
- Can be used as an additive or as an end user product
- 100% Biodegradable, non-toxic, does not contain any heavy metals and is environmentally friendly

### Applications

- High performing environmental Hydro test Additive
- Tubular structures, pipes and vessels – dry or wet
- Internal surfaces of compressors, turbines, engines, tanks, boilers, heat exchangers
- Steam condensate lines, closed circuit heating and cooling towers and systems
- Equipment during and after hydrotesting by dry fog
- Parts, components and completed assemblies during shipping and storage
- Equipment, parts, components etc. in packaging, shipping and storage
- Additive to shot-blasting media
- Additive to standing water
- Additive to all water systems or water based coating systems
- Voids, cavities and tanks

# SEI Chemical

9005 West Sahara Avenue

Las Vegas, Nevada, 89117

Tel: 800 804 3978 Fax: 800 804 3975

---



## Benefits

- Vapor-phase inhibiting action protects inaccessible and recessed surfaces
- Products can be shipped to customers without ever removing the powder
- No regeneration is required as VCI will regenerate itself
- SEI Corrosion Proof is extremely healthy for internal systems
- If the SEI Corrosion Proof layer is disturbed by moisture or the opening of an enclosed space, the layer is replenished by continuous vapor redeposition
- No surface preparation is required
- Prevents corrosion on pre-coated and painted surfaces
- Does not increase alkalinity
- Provides economical protection for very large applications
- 100% biodegradable and environmentally friendly
- Very low toxicity (LD-50 = 5,000 mg oral-rat)
- Easy to apply
- SEI Corrosion Proof layer does not need to be removed prior to processing
- If required, Powder is easily removed by air gun or water flush
- Provides protection for very large applications

## Method of Application:

Apply SEI Corrosion Proof Powder by dusting, fogging or sprinkling. Apply SEI Corrosion Proof Powder in aqueous form by spray, brush, flush or immersion. After application, simply cover or seal the interior cavity or void. Fogging is easily achieved by using a low-pressure air hose and sandblast cup. Large, conventional sandblasting systems can also be used. For Dry Powder Application with average environmental conditions, use per 0.5 ounces of SEI Corrosion Proof Powder per 1 cubic foot of enclosed space. The dosage can be increased for more severe conditions. For Aqueous Applications with average environmental conditions, use 2.5% to 3.5% SEI Corrosion Proof Powder by weight of water. The dosage can be increased for more severe conditions.

## Example Application:

SEI Corrosion Proof Powder should be added to hydrotest waters. This solution is drained and the vessel sealed after completion of the test. SEI Corrosion Proof Powder is also typically blown into pipes or cavities with the openings closed or sealed afterwards.

## Method of Removal:

If required, SEI Corrosion Proof Powder in Powder form can be easily removed by using a low-pressure air gun or by a water rinse. Typically, if applied in aqueous form, the product does not require removal. If necessary, a simple water rinse or flush will suffice.

## Typical Properties:

Appearance - White crystalline Powder

PH - 6.5-6.9

# SEI Chemical

9005 West Sahara Avenue

Las Vegas, Nevada, 89117

Tel: 800 804 3978 Fax: 800 804 3975

---



## **Packaging & Storage:**

SEI Corrosion Proof Powder is available in standard 22-pound pails. Can be custom packaged. Store in a sealed container in a dry warehouse, and avoid direct exposure to sunlight with temperatures not exceeding 150°F (66°C). Under these conditions, shelf life is up to 24 months.

## **Disclaimer**

The information provided is to be used as a guide and customers should perform their own tests to ensure performance in their application. All data, statements, and recommendations made herein are based upon information we believe to be reliable, but are made without any representation, guarantee or warranty of accuracy.

All statements, technical information and recommendations contained herein are based on tests SEI Chemical believes to be reliable, but the accuracy or completeness thereof is not guaranteed. SEI Chemical warrants SEI products will be free from defects when shipped to customer. SEI In Chemical obligation under this warranty shall be limited to replacement of product that proves to be defective. To obtain replacement product under this warranty, the customer must notify SEI Chemical of the claimed defect within six months after shipment of product to customer. All freight charges for replacement products shall be paid by customer. SEI Chemical shall have no liability for any injury, loss or damage arising out of the use of or the inability to use the products. BEFORE USING, USER SHALL DETERMINE THE SUITABILITY OF THE PRODUCT FOR ITS INTENDED USE, AND USER ASSUMES ALL RISK AND LIABILITY WHATSOEVER IN CONNECTION THEREWITH. No representation or recommendation not contained herein shall have any force or effect unless in a written document signed by an officer of SEI Chemical. THE FOREGOING WARRANTY IS EXCLUSIVE AND IN LIEU OF ALL OTHER WARRANTIES, EXPRESS, IMPLIED OR STATUTORY, INCLUDING WITHOUT LIMITATION ANY IMPLIED WARRANTY OF MERCHANTABILITY OR OF FITNESS FOR A PARTICULAR PURPOSE. IN NO CASE SHALL SEI INDUSTRIAL PRODUCTS BE LIABLE FOR INCIDENTAL OR CONSEQUENTIAL DAMAGES. LIMITED WARRANTY, FOR INDUSTRIAL USE ONLY, KEEP OUT OF REACH OF CHILDREN, KEEP CONTAINER TIGHTLY CLOSED, NOT FOR INTERNAL CONSUMPTION, CONSULT MATERIAL SAFETY DATA SHEET FOR MORE INFORMATION.

# SEI Chemical

9005 West Sahara Avenue

Las Vegas, Nevada, 89117

Tel: 800 804 3978 Fax: 800 804 3975

---



## Sei CORROSION PROOF™ Oil base

### Description

The SEI Corrosion Proof Oil Base utilizes CPT™ Technology (Corrosion Preventative Technology). This is a highly charged and durable migrational molecule that has the ability to penetrate and travel through a wide variety of mediums in order to find and bond with all types of metal. The CPT molecule needs to fulfill its ionic attraction by bonding with either ferrous or non-ferrous metal. Once the CPT molecule has found metal it creates a highly durable, resilient and robust chemical bond. This bond provides extensive protection for long periods of time in very harsh environments. The SEI Corrosion Proof Oil Base is our best corrosion inhibitor for use as an oil additive and/or long-term corrosion preventative oil based coating. This product is excellent for mothballing, shipping or storage of parts and equipment. As an additive, in small percentages, it has a minimal effect on viscosities. It has extreme resistance to salt water, salt spray and humidity making SEI Corrosion Proof Oil Base particularly useful in marine, industrial, commercial, operational and offshore corrosion preventative applications. This product provides optimal long-term corrosion protection, for ferrous and non-ferrous metals exposed to harsh environments.

- **Dry Film Thickness mil:** 1-2 mil (25-50 µm)
- **Dry Time:** 1 hr.
- **VOC g/l (lbs/gal):** 30 (.25)
- **Solids %:** 97
- **Coverage ft<sup>2</sup>/gal (m<sup>2</sup>/l):** 800 (19.6)
- **Application Method:** Spray, dip, roll, brush
- **Length of Protection:** 5 years

### Features

- Self-healing
- Temperature stable up to 180°F (82°C)
- Excellent lubricity
- Extends tool and equipment life for metalworking operations
- Excellent outdoor protection
- Excellent oil additive
- Dilutable with oil
- Meets MIL-C-16173D (Grade 2), QPL product
- NSN 8030-00-244-1297

# SEI Chemical

9005 West Sahara Avenue

Las Vegas, Nevada, 89117

Tel: 800 804 3978 Fax: 800 804 3975

---



## Advantages

- Allows protected metal surfaces to be easily handled.
- No surface preparation, as SEI Corrosion Proof Oil Base will adhere to the pre-rusted, oily and dirty surfaces.
- A thixotropic liquid, self-healing, resistant to sag, run-off, and flow.
- Excellent U.V. resistance, providing optimal outdoor protection without cracking or chipping of protective films after prolonged exposures to sunlight.
- Universal protection for ferrous and non-ferrous metals and alloys.
- The non-conductive film with high resistivity and insulating properties effectively prevents galvanic corrosion between dissimilar metals.
- Has moisture-displacing characteristics and penetrating film characteristics
- Thermally stable over a broad range of temperature.
- Applicable to the following specifications: MIL-C-0083933A and MIL-C-16173D
- Easy removable with mild solvents.

## Typical Properties

Appearance:	Oil Base tan liquid
Specific Gravity:	0.92 at 25°C
Film type:	Dry Oily film
Flash point:	Concentrate form 233°F
Viscosity:	10,000-40,000 cps
Shelf Life:	24 months @ 75°F (24°C)
Non-volatile Content:	94-98%
Theoretical Spread Rate:	500-525 ft <sup>2</sup> /gal @ 3 mils
Weight per Gallon:	7.7-8.2 lb/gal (0.92-0.98 kg/l)

	<u>ASTM</u>	<u>DFT</u>	<u>Carbon Steel (1010)</u>	<u>Aluminum</u>
<b>Humidity</b>	D-1748	1 mil (25 microns)	7000+ hr.	3000+ hr.
<b>Salt Spray</b>	B-117	1 mil (25 microns)	700+ hr.	1200+ hr.

## Applications

- Wire rope
- Electrical connections/wiring
- Sheltered coating
- Structural steel
- Gear protectant/lubricant
- Long-term (5+ years) equipment lay-up
- Stamping oil additive
- Drawing oil additive
- Cylinders
- Working/moving parts



# SEI Chemical

9005 West Sahara Avenue

Las Vegas, Nevada, 89117

Tel: 800 804 3978 Fax: 800 804 3975

---



## *Maintenance:*

Protection of structural plant and equipment

Mothballing refineries, power plants, and chemical plants

External surfaces of large machines, pipes, pumps, heat exchangers, etc - during standby, field storage, or any operational equipment.

## *Shipping & Storage:*

Covered or uncovered packages shipped overseas and/or during extended on-site storage

## *Construction:*

Steels for fabrication, structural steel, metal forgings or storage of metals and in field use

Concrete reinforcing bars, aluminum or steel sidings joints, profiles, bridges, structures, casings and steel roofs

## *Marine & Offshore:*

External and internal surfaces of offshore platforms and equipment.

Ballast tanks, storage, and process vessels

Castings, pumps, valves, and compressors, heat exchangers, boilers, turbines, and transformers.

Wire rope, cable, wire, and chains.

Internal and external surfaces of drill pipe, sucker rods, and other tubular products.

## *OEM:*

Internal and external surfaces of engines.

Bearings, brake drums, engine components.

Frames, cabs, stampings, castings and plate steel.

Transmission, hydraulic pistons, cylinders, and equipment undercoating

## **Method of Application & Packaging**

- Product should be mixed thoroughly and uniform prior to use.
- Apply by dip, spray, roll or brush - Film thickness of 2 mils to 5 mils.
- SEI Corrosion Proof Oil Base can be applied over pre-rusted or oily surfaces.
- 5-gal & 55-gal

## **Disclaimer**

The information provided is to be used as a guide and customers should perform their own tests to ensure performance in their application. All data, statements, and recommendations made herein are based upon information we believe to be reliable, but are made without any representation, guarantee or warranty of accuracy.

All statements, technical information and recommendations contained herein are based on tests SEI Chemical believes to be reliable, but the accuracy or completeness thereof is not guaranteed. SEI Chemical warrants SEI products will be free from defects when shipped to customer. SEI In Chemical obligation under this warranty shall be limited to replacement of product that proves to be defective. To obtain replacement product under this warranty, the customer must notify SEI Chemical of the claimed defect within six months after shipment of product to customer. All freight charges for replacement products shall be paid by customer. SEI Chemical shall have no liability for any injury, loss or damage arising out of the use of or the inability to use the products. BEFORE USING, USER SHALL DETERMINE THE SUITABILITY OF THE PRODUCT FOR ITS INTENDED USE, AND USER ASSUMES ALL RISK AND LIABILITY WHATSOEVER IN CONNECTION THEREWITH. No representation or recommendation not contained herein shall have any force or effect unless in a written document signed by an officer of SEI Chemical. THE FOREGOING WARRANTY IS EXCLUSIVE AND IN LIEU OF ALL OTHER WARRANTIES, EXPRESS, IMPLIED OR STATUTORY, INCLUDING WITHOUT LIMITATION ANY IMPLIED WARRANTY OF MERCHANTABILITY OR OF FITNESS FOR A PARTICULAR PURPOSE. IN NO CASE SHALL SEI INDUSTRIAL PRODUCTS BE LIABLE FOR INCIDENTAL OR CONSEQUENTIAL DAMAGES. LIMITED WARRANTY, FOR INDUSTRIAL USE ONLY, KEEP OUT OF REACH OF CHILDREN, KEEP CONTAINER TIGHTLY CLOSED, NOT FOR INTERNAL CONSUMPTION, CONSULT MATERIAL SAFETY DATA SHEET FOR MORE INFORMATION.

# SEI Chemical

9005 West Sahara Avenue

Las Vegas, Nevada, 89117

Tel: 800 804 3978 Fax: 800 804 3975

---



## Sei CORROSION PROOF™ COAT

### **Description**

The SEI Corrosion Proof Coat utilizes CPT™ Technology (Corrosion Preventative Technology). This is a highly charged and durable migrational molecule that has the ability to penetrate and travel through a wide variety of mediums in order to find and bond with all types of metal. The CPT molecule needs to fulfill its ionic attraction by bonding with either ferrous or non-ferrous metal. Once the CPT molecule has found metal it creates a highly durable, resilient and robust chemical bond. This bond provides extensive protection for long periods of time in very harsh environments. SEI Corrosion Proof Coat is a brown thixotropic coating. It comes in oil based or solvent-based carriers. The residual film, after solvent evaporation has extreme resistance to salt water and salt spray, making SEI Corrosion Proof Coat particularly useful in marine, industrial, and off-shore corrosion proofing applications. The film dries semi-clear and transparent. SEI Corrosion Proof Coat provides optimal long-term corrosion protection, for ferrous and non-ferrous metals exposed to harsh environments.

**Film Type:** Waxy

**Dry Film Thickness mil:** 2-3 mil (50-75 µm)

**Dry Time:** 30 min.

**VOC g/l (lbs/gal):** 2.9-3.1 lb/gal (347-372 g/l)

**Solids %:** 55

**Coverage ft<sup>2</sup>/gal (m<sup>2</sup>/l):** 300 (7.4)

**Application Method:** Spray, dip, roll, brush

**Topcoatability:** Yes

**Length of Protection:** 5 years

# SEI Chemical

9005 West Sahara Avenue

Las Vegas, Nevada, 89117

Tel: 800 804 3978 Fax: 800 804 3975

---



## Advantages

- Dry to touch film properties allow protected metal surfaces to be easily handled.
- No surface preparation, as SEI Corrosion Proof Coat will adhere to the pre-rusted, oily and dirty surfaces.
- A thixotropic liquid, self-healing, resistant to sag, run-off, and flow.
- Excellent U.V. resistance, providing optimal outdoor protection without cracking or chipping of protective films after prolonged exposures to sunlight.
- Universal protection for ferrous and non-ferrous metals and alloys.
- The non-conductive film with high resistivity and insulating properties effectively prevents galvanic corrosion between dissimilar metals.
- Has moisture-displacing characteristics and penetrating film characteristics
- Thermally stable coatings over a broad range of temperature.
- Applicable to the following specifications: MIL-C-0083933A and MIL-C-16173D
- Moisture displacing and penetrating film characteristics.
- Easy removal by petroleum solvents.

## Typical Properties

- Appearance brown viscous liquid
- Coverage 300-330 ft<sup>2</sup>/gal @ 3 mils (7-8 m<sup>2</sup>/l @ 75 microns)
- Drying to touch time 0.5-2 hours
- Dry cure film time 12-24 hours
- Shelf Life 24 months @ 75°F (24°C)
- Non-volatile Content 57-61%
- Specific Gravity: 0.92 at 25°C
- Viscosity at 23°C 600-5,000 cps (6 rpm)
- VOC 2.9-3.1 lb/gal (347-372 g/l)
- Density 7.4-7.6 lb/gal (0.89-0.91 kg/l)
- Flash point: Concentrate form 232°C
- Carrier: Mineral spirits/Napthenic oil

## Features

- Flexible
- Excellent salt spray protection
- Excellent outdoor protection
- Multimetal protection
- Excellent UV resistance
- Moisture displacing
- Cured film is heat stable up to 392°F (200°C)
- Conforms to MIL-C-16173D (Grades 1 and 2)
- NATO 6850-66-132-5848
- NATO 6850-55-132-6099
- NSN 8030-00-62-6950

# SEI Chemical

9005 West Sahara Avenue

Las Vegas, Nevada, 89117

Tel: 800 804 3978 Fax: 800 804 3975

---



## Protection Properties

	<u>ASTM</u>	<u>DFT</u>	<u>Carbon Steel (1010)</u>
Salt Spray	B-117	2-3 mils (50-75 microns)	900-1500 hr.

## Applications

### *Maintenance:*

Protection of structural plant and equipment

Mothballing refineries, power plants, and chemical plants

External surfaces of large machines, pipes, pumps, heat exchangers, etc - during standby, field storage, or operation

### *Shipping & Storage:*

Covered or uncovered packages shipped overseas and/or during extended on-site storage

### *Construction:*

Steels for fabrication, structural or storage and in field use

Concrete reinforcing bars, aluminum or steel sidings joints, profiles, bridges, structures, casings and steel roofs

### *Marine & Offshore:*

External and internal surfaces of offshore platforms and equipment.

Ballast tanks, storage, and process vessels

Castings, pumps, valves, and compressors, heat exchangers, boilers, turbines, and transformers.

Wire rope, cable, wire, and chains.

Internal and external surfaces of drill pipe, sucker rods, and other tubular products.

### *OEM:*

Internal and external surfaces of engines.

Bearings, brake drums, engine components.

Frames, cabs, stampings, castings and plate steel.

Transmission, hydraulic pistons, cylinders, and equipment undercoating

- Pipe coating
- Parts storage
- Underbody coating
- Wire rope
- Steel plate
- Machined parts

## Method of Application

- Dipping, spraying or brushing are recommended methods of applying - Film thickness of 2 mils to 5 mils.
- SEI Corrosion Proof Coat can be applied over pre-rusted or oily surfaces.

# SEI Chemical

9005 West Sahara Avenue

Las Vegas, Nevada, 89117

Tel: 800 804 3978 Fax: 800 804 3975

---



## **Disclaimer**

The information provided is to be used as a guide and customers should perform their own tests to ensure performance in their application. All data, statements, and recommendations made herein are based upon information we believe to be reliable, but are made without any representation, guarantee or warranty of accuracy.

All statements, technical information and recommendations contained herein are based on tests SEI Chemical believes to be reliable, but the accuracy or completeness thereof is not guaranteed. SEI Chemical warrants SEI products will be free from defects when shipped to customer. SEI In Chemical obligation under this warranty shall be limited to replacement of product that proves to be defective. To obtain replacement product under this warranty, the customer must notify SEI Chemical of the claimed defect within six months after shipment of product to customer. All freight charges for replacement products shall be paid by customer. SEI Chemical shall have no liability for any injury, loss or damage arising out of the use of or the inability to use the products. BEFORE USING, USER SHALL DETERMINE THE SUITABILITY OF THE PRODUCT FOR ITS INTENDED USE, AND USER ASSUMES ALL RISK AND LIABILITY WHATSOEVER IN CONNECTION THEREWITH.

No representation or recommendation not contained herein shall have any force or effect unless in a written document signed by an officer of SEI Chemical. THE FOREGOING WARRANTY IS EXCLUSIVE AND IN LIEU OF ALL OTHER WARRANTIES, EXPRESS, IMPLIED OR STATUTORY, INCLUDING WITHOUT LIMITATION ANY IMPLIED WARRANTY OF MERCHANTABILITY OR OF FITNESS FOR A PARTICULAR PURPOSE. IN NO CASE SHALL SEI INDUSTRIAL PRODUCTS BE LIABLE FOR INCIDENTAL OR CONSEQUENTIAL DAMAGES. LIMITED WARRANTY, FOR INDUSTRIAL USE ONLY, KEEP OUT OF REACH OF CHILDREN, KEEP CONTAINER TIGHTLY CLOSED, NOT FOR INTERNAL CONSUMPTION, CONSULT MATERIAL SAFETY DATA SHEET FOR MORE INFORMATION.

# SEI Chemical

9005 West Sahara Avenue

Las Vegas, Nevada, 89117

Tel: 800 804 3978 Fax: 800 804 3975

---



## Sei CORROSION PROOF™ RUST CONVERTER

### Product Description

The SEI Corrosion Proof Rust Converter utilizes CPT™ Technology (Corrosion Preventative Technology). This is a highly charged and durable migrational molecule that has the ability to penetrate and travel through a wide variety of mediums in order to find and bond with all types of metal. The CPT molecule needs to fulfill its ionic attraction by bonding with either ferrous or non-ferrous metal. Once the CPT molecule has found metal it creates a highly durable, resilient and robust chemical bond. This bond provides extensive protection for long periods of time in very harsh environments. The SEI Corrosion Proof Rust Converter is a water-based primer recommended for application to rusty or poorly prepared steel surfaces where further corrosion protection is required and good surface preparation is difficult to achieve. SEI Corrosion Proof Rust Converter is formulated to penetrate rust, eliminate rust, penetrate to the bare metal and stop further rusting. SEI Corrosion Proof Rust Converter allows the CPT molecule to penetrate and modify the surface rust into a hydrophobic passive layer. SEI Corrosion Proof Rust Converter combines the above-mentioned technology with a high solids waterborne moisture displacing resin with extremely low water vapor permeability. SEI Corrosion Proof Rust Converter does not contain tannic, phosphoric acids or any heavy metals and is a low VOC and environmentally friendly product. Furthermore, it provides extensive long-term corrosion protection for poorly prepared substrates, and can be top-coated with solvent-based and water-based paints with no bleeding what so ever.

### Features

- SEI Corrosion Proof Rust Converter converts rust quickly and can be applied under varying weather conditions
- Provides >800 hours of corrosion protection with 3-mil (75 microns) application under Salt Spray conditions (ASTM B 117), on pre-rusted steel parts
- Works even in the presence of excess salt contamination (perfect for marine applications)
- The resin used in the primer provides flame-retardancy properties to the product
- Provides excellent protection against and totally prevents re-rusting
- Promotes top-coating adhesion
- Water-based
- VOC compliant
- AQMD Compliant
- Environmentally friendly, non-toxic
- Non-flammable, non-combustible

# SEI Chemical

2<sup>nd</sup> Floor, 620 8<sup>th</sup> Avenue South West  
Calgary, Alberta, Canada  
T2P 1G4  
Tel: 403 259 5072 Fax: 403 259 0647

---



## Properties

Appearance milky off-white viscous liquid

- Total Solids, by weight 55-58%
- Total Solids, by volume 40-42%
- Density 11 lb/gal (1.32 kg/l)
- Salt Spray (ASTM B 117) >800 hours at 2.3-3.0 mils (37.5-75 microns DFT)
- VOC 0.56 lb/gal (0.07 kg/l)
- Theoretical Spread Rate 350-450 sq.ft/gal @ 1mil

## Typical Application

SEI Corrosion Proof Rust Converter is recommended for use on all steel surfaces as a rust converter primer. The product can be used in situations where proper cleaning or sandblasting is difficult.

- Industrial maintenance
- General metal
- Marine

## Application

It is recommended that any loose rust be removed with a wire brush and the rusty steel surface washed with high-pressure water to remove excess salt contamination. Brush, roll or spray SEI Corrosion Proof Rust Converter with no surface show-through at 3-5 mils (75-125 microns) wet film thickness. **Brush or roll application** is preferred to ensure penetration into the rust. The coating can be applied to dry or damp surfaces. A second coat of SEI Corrosion Proof Rust Converter should be applied within 20-30 minutes after the first application to ensure maximum protection. Allow to dry for 8-12 hours before applying the SEI Corrosion Proof Topcoat.

## Limitations

- The resin system in the primer is not UV stable and changes color in outside conditions. This does not change converting or protection properties and does not affect the topcoat or topcoat adhesion.
- For proper application, the product should always be mixed thoroughly before use.
- On certain types of rust, various degrees of darkening may be visible, and may even be incomplete under certain drying conditions. The degree of darkening does not affect the coating; the primer will continue to convert rust. Upon drying, the formulation will exhibit excellent base corrosion preventative performance.

## Packaging & Storage

SEI Corrosion Proof Rust Converter is available in 5-gallon plastic containers and 55-gallon metal drums. Keep product from freezing. The shelf life of the coating is one year.

# SEI Chemical

2<sup>nd</sup> Floor, 620 8<sup>th</sup> Avenue South West  
Calgary, Alberta, Canada  
T2P 1G4  
Tel: 403 259 5072 Fax: 403 259 0647

---



## **Disclaimer**

The information provided is to be used as a guide and customers should perform their own tests to ensure performance in their application. All data, statements, and recommendations made herein are based upon information we believe to be reliable, but are made without any representation, guarantee or warranty of accuracy.

All statements, technical information and recommendations contained herein are based on tests SEI Chemical believes to be reliable, but the accuracy or completeness thereof is not guaranteed. SEI Chemical warrants SEI products will be free from defects when shipped to customer. SEI In Chemical obligation under this warranty shall be limited to replacement of product that proves to be defective. To obtain replacement product under this warranty, the customer must notify SEI Chemical of the claimed defect within six months after shipment of product to customer. All freight charges for replacement products shall be paid by customer. SEI Chemical shall have no liability for any injury, loss or damage arising out of the use of or the inability to use the products. BEFORE USING, USER SHALL DETERMINE THE SUITABILITY OF THE PRODUCT FOR ITS INTENDED USE, AND USER ASSUMES ALL RISK AND LIABILITY WHATSOEVER IN CONNECTION THEREWITH. No representation or recommendation not contained herein shall have any force or effect unless in a written document signed by an officer of SEI Chemical. THE FOREGOING WARRANTY IS EXCLUSIVE AND IN LIEU OF ALL OTHER WARRANTIES, EXPRESS, IMPLIED OR STATUTORY, INCLUDING WITHOUT LIMITATION ANY IMPLIED WARRANTY OF MERCHANTABILITY OR OF FITNESS FOR A PARTICULAR PURPOSE. IN NO CASE SHALL SEI INDUSTRIAL PRODUCTS BE LIABLE FOR INCIDENTAL OR CONSEQUENTIAL DAMAGES. LIMITED WARRANTY, FOR INDUSTRIAL USE ONLY, KEEP OUT OF REACH OF CHILDREN, KEEP CONTAINER TIGHTLY CLOSED, NOT FOR INTERNAL CONSUMPTION, CONSULT MATERIAL SAFETY DATA SHEET FOR MORE INFORMATION.



# SEI Chemical

9005 West Sahara Avenue  
Las Vegas, Nevada, 89117  
Tel: 800 804 3978 Fax: 800 804 3975

---



## Sei CORROSION PROOF™ TOP COAT-EN

### **Product Description**

The SEI Corrosion Proof Topcoat-EN utilizes CPT™ Technology (Corrosion Preventative Technology). This is a highly charged and durable migrational molecule that has the ability to penetrate and travel through a wide variety of mediums in order to find and bond with all types of metal. The CPT molecule needs to fulfill its ionic attraction by bonding with either ferrous or non-ferrous metal. Once the CPT molecule has found metal it creates a highly durable, resilient and robust chemical bond. This bond provides extensive protection for long periods of time in very harsh environments. The SEI Corrosion Proof Top Coat-EN is an environmentally friendly, non-toxic and high-build topcoat that provides high-end long-term corrosion prevention for metal in tough atmospheric conditions. The SEI Corrosion Proof Top Coat-EN is excellent for applications that require a thicker coating for added physical protection. It can be applied directly to metal or used in conjunction with a primer. This coating has excellent UV light resistance.

**Film Type:** Hard

**Dry Film Thickness mil:** 5-7 mil (125-175 µm)

**Dry Time:** 1 hr.

**VOC g/l (lbs/gal):** 150 (1.25)

**Solids %:** 40

**Coverage ft<sup>2</sup>/gal (m<sup>2</sup>/l):** 110 (2.9)

**Application Method:** Spray, dip, roll, brush

**Topcoatability:** Yes

**Length of Protection:** 8 years

### **Features**

- Consistent film build
- High-build film (6-8 mils/150-200 microns) DFT
- Multimetal protection
- Long-term protection (10 years)
- Semi-gloss appearance

# SEI Chemical

9005 West Sahara Avenue  
Las Vegas, Nevada, 89117  
Tel: 800 804 3978 Fax: 800 804 3975

---



## Application

The SEI Corrosion Proof Top Coat-EN must be thoroughly mixed prior to use.

Apply by brush, spray or roller. Normal WFT of 13-15 mils (325-375 microns) yields 6-8 mils (150-200 microns) DFT.

NACE SSPC ARS 2 or 3 SP 6 or 10 Low A-3 or better

Product cleanup: Use soap and water to cleanup tools and over spray.

## Typical Properties

- Appearance Gray viscous liquid
- Dry to Cure Time 24-72 hr.
- Dry to Recoat Time 4-7 hr.
- Dry to Touch Time 30-60 minutes
- Film Type Hard
- Non-volatile Content 47-57%
- Prohesion (ASTM G-85) 500 hr. @ 4.5 mils (113 microns) DFT on Carbon Steel
- Shelf Life 12 months @ 75°F/24°C
- Theoretical Coverage 150-180 ft<sup>2</sup>/gal at 5 mils (3-4 m<sup>2</sup>/l at 125 microns)
- VOC 146 g/l (1.22 lb/gal)
- Density 9.8-10.3 lb/gal (1.18-1.24 kg/l)

## Limitations

Avoid using in situations where the coating is immersed in water or other liquids as this could lead to softening of the film.

## Packaging & Storage

- 5-gal & 55-gal
- Keep product from freezing.

## Disclaimer

The information provided is to be used as a guide and customers should perform their own tests to ensure performance in their application. All data, statements, and recommendations made herein are based upon information we believe to be reliable, but are made without any representation, guarantee or warranty of accuracy.

All statements, technical information and recommendations contained herein are based on tests SEI Chemical believes to be reliable, but the accuracy or completeness thereof is not guaranteed. SEI Chemical warrants SEI products will be free from defects when shipped to customer. SEI In Chemical obligation under this warranty shall be limited to replacement of product that proves to be defective. To obtain replacement product under this warranty, the customer must notify SEI Chemical of the claimed defect within six months after shipment of product to customer. All freight charges for replacement products shall be paid by customer. SEI Chemical shall have no liability for any injury, loss or damage arising out of the use of or the inability to use the products. BEFORE USING, USER SHALL DETERMINE THE SUITABILITY OF THE PRODUCT FOR ITS INTENDED USE, AND USER ASSUMES ALL RISK AND LIABILITY WHATSOEVER IN CONNECTION THEREWITH. No representation or recommendation not contained herein shall have any force or effect unless in a written document signed by an officer of SEI Chemical. THE FOREGOING WARRANTY IS EXCLUSIVE AND IN LIEU OF ALL OTHER WARRANTIES, EXPRESS, IMPLIED OR STATUTORY, INCLUDING WITHOUT LIMITATION ANY IMPLIED WARRANTY OF MERCHANTABILITY OR OF FITNESS FOR A PARTICULAR PURPOSE. IN NO CASE SHALL SEI INDUSTRIAL PRODUCTS BE LIABLE FOR INCIDENTAL OR CONSEQUENTIAL DAMAGES. LIMITED WARRANTY, FOR INDUSTRIAL USE ONLY, KEEP OUT OF REACH OF CHILDREN, KEEP CONTAINER TIGHTLY CLOSED, NOT FOR INTERNAL CONSUMPTION, CONSULT MATERIAL SAFETY DATA SHEET FOR MORE INFORMATION.



## Sei CORROSION PROOF™ PRIMER-EN

### **Product Description**

The SEI Corrosion Proof Primer-EN utilizes CPT™ Technology (Corrosion Preventative Technology). This is a highly charged and durable migrational molecule that has the ability to penetrate and travel through a wide variety of mediums in order to find and bond with all types of metal. The CPT molecule needs to fulfill its ionic attraction by bonding with either ferrous or non-ferrous metal. Once the CPT molecule has found metal it creates a highly durable, resilient and robust chemical bond. This bond provides extensive protection for long periods of time in very harsh environments. The SEI Corrosion Proof Primer-EN is an environmentally friendly, non-toxic, waterborne primer with outstanding corrosion resistance. This coating is based on a hydrophobic latex resin system. Our most powerful migrational corrosion inhibitor works phenomenally well with this particular resin system and will 100% prevent the oxidation process. The SEI Corrosion Proof Primer-EN is designed to be used with other waterborne topcoats or solvent-based topcoats. This is a fast-drying, thixotropic, low viscosity coating that resists sagging. It also has excellent resistance to settling in the can. This dry-to-touch film offers extended protection in very harsh environments. Excellent flexibility gives optimal outdoor performance without cracking or chipping due and has excellent UV resistance.

**Film Type:** Hard

**Dry Film Thickness mil:** 2 mil (50 µm)

**Dry Time:** 20 min.

**VOC g/l (lbs/gal):** 150 (1.25)

**Solids %:** 50

**Coverage ft<sup>2</sup>/gal (m<sup>2</sup>/l):** 306 (7.5)

**Application Method:** Spray, dip, roll, brush

**Topcoatability:** Yes

**Length of Protection:** Long Term

### **Metals Protected**

- Carbon Steel
- Cast Iron
- Aluminum
- Stainless Steel

# SEI Chemical

9005 West Sahara Avenue  
Las Vegas, Nevada, 89117  
Tel: 800 804 3978 Fax: 800 804 3975

---



## Application

Check for settling in the can. If necessary, gently agitate.

### Conventional Sprayer

Best results can be obtained using a 0.013"-0.017" (0.03 cm - 0.04 cm) tip at 1200-1700 psi (83-117 bar).

## Typical Properties

- Appearance Gray viscous liquid
- Non-volatile Content 46-51%
- pH 8.5-9.5 (Neat)
- Density 9.7-10.2 lb/gal (1.16-1.22 kg/l)
- Solids by Volume 35-39%
- Recommended DFT 1.5-3.0 mils (37.5-75 microns)
- Theoretical Spread Rate 613 ft<sup>2</sup>/gal @ 1 mil
- 15 m<sup>2</sup>/l @ 25 microns
- Dry to Touch - 30 minutes @ 75°F (24°C)
- Temperature Stability 45°-90°F (7°-32°C)
- Minimum Interval before Over coating (Varies)
- 0.5-6.0 hours
- Flash Point >248°F (120°C)
- VOC (ASTM-3960) 1.2 lb/gal (143.8 g/l)
- Viscosity 1600-2200 cps

## Corrosion Resistant Data

(on carbon steel 1010 Q-panels)

	Dry Film Thickness Mils (Microns)	Hours to Failure
ASTM B-117 (Salt spray)	2.0 (50)	800-1100
ASTM D-1748 (Humidity)	2.0 (50)	2000+
ASTM G-85 A5 (Prohesion)	2.0 (50)	800-1100

## Packaging & Storage

- 5-gal & 55-gal
- Minimum storage temperature: 35°F (2°C)
- Maximum storage temperature: 120°F (49°C)
- Recommended Thinner Fresh Water
- Airless Spray None required
- Store in heated warehouse to avoid freezing.
- Shelf life of 12 months.

# SEI Chemical

9005 West Sahara Avenue  
Las Vegas, Nevada, 89117  
Tel: 800 804 3978 Fax: 800 804 3975

---



## **Disclaimer**

The information provided is to be used as a guide and customers should perform their own tests to ensure performance in their application. All data, statements, and recommendations made herein are based upon information we believe to be reliable, but are made without any representation, guarantee or warranty of accuracy.

All statements, technical information and recommendations contained herein are based on tests SEI Chemical believes to be reliable, but the accuracy or completeness thereof is not guaranteed. SEI Chemical warrants SEI products will be free from defects when shipped to customer. SEI Chemical obligation under this warranty shall be limited to replacement of product that proves to be defective. To obtain replacement product under this warranty, the customer must notify SEI Chemical of the claimed defect within six months after shipment of product to customer. All freight charges for replacement products shall be paid by customer. SEI Chemical shall have no liability for any injury, loss or damage arising out of the use of or the inability to use the products. BEFORE USING, USER SHALL DETERMINE THE SUITABILITY OF THE PRODUCT FOR ITS INTENDED USE, AND USER ASSUMES ALL RISK AND LIABILITY WHATSOEVER IN CONNECTION THEREWITH. No representation or recommendation not contained herein shall have any force or effect unless in a written document signed by an officer of SEI Chemical. THE FOREGOING WARRANTY IS EXCLUSIVE AND IN LIEU OF ALL OTHER WARRANTIES, EXPRESS, IMPLIED OR STATUTORY, INCLUDING WITHOUT LIMITATION ANY IMPLIED WARRANTY OF MERCHANTABILITY OR OF FITNESS FOR A PARTICULAR PURPOSE. IN NO CASE SHALL SEI INDUSTRIAL PRODUCTS BE LIABLE FOR INCIDENTAL OR CONSEQUENTIAL DAMAGES. LIMITED WARRANTY, FOR INDUSTRIAL USE ONLY, KEEP OUT OF REACH OF CHILDREN, KEEP CONTAINER TIGHTLY CLOSED, NOT FOR INTERNAL CONSUMPTION, CONSULT MATERIAL SAFETY DATA SHEET FOR MORE INFORMATION.

# SEI Chemical

9005 West Sahara Avenue

Las Vegas, Nevada, 89117

Tel: 800 804 3978 Fax: 800 804 3975

---



## Sei CORROSION PROOF™ TOP-COAT

### **Description**

The SEI Corrosion Proof Topcoat utilizes CPT™ Technology (Corrosion Preventative Technology). This is a highly charged and durable migrational molecule that has the ability to penetrate and travel through a wide variety of mediums in order to find and bond with all types of metal. The CPT molecule needs to fulfill its ionic attraction by bonding with either ferrous or non-ferrous metal. Once the CPT molecule has found metal it creates a highly durable, resilient and robust chemical bond. This bond provides extensive protection for long periods of time in very harsh environments. The Corrosion Proof Topcoat is a fast drying, glossy, high-build durable topcoat that provides long-term corrosion protection. Excellent for all types of production line finishing, industrial and commercial applications where speed is essential. This coating has great chemical, petroleum, humidity and chloride resistance. For extreme environments and further protection the SEI Corrosion Proof™ Offshore Coat can be used over this topcoat to allow a higher concentration of the CPT molecule. This is an Environmental System. Available in clear, white, black, gray and a full range of custom colors. SEI Corrosion Proof Topcoat contains a non-toxic resin and is easily weldable.

### **Features & Recommended Uses**

- For use on structural steel, equipment, machinery, piping, pipelines, offshore platforms and equipment, vessels, tanks, maintenance finishes, corrosive environments (primer required), and any other metal applications and where good exterior protection is required.
- Color: Complete range of factory mixed and custom colors
- Finish: Gloss
- Long-Term protection
- Multimetal Protection
- Consistent Film
- Film Type: Hard
- Prohesion (ASTM G-85): 600 hrs. @ 2 mils
- Non-Volatile Content - Solids: 48-52 %
- Recommended Mils per Coat: 2.0 - 2.5 mils dry, 2.94 - 4.41mils wet
- Viscosity Mixed: 65 - 70 KU
- Shelf Life: 12 months
- Theoretical Coverage: 300-400 sq.ft./gal. @ 1 mil dry film thickness. Actual coverage will vary due to job conditions, type of substrate and efficiency of application equipment.

# SEI Chemical

9005 West Sahara Avenue

Las Vegas, Nevada, 89117

Tel: 800 804 3978 Fax: 800 804 3975

---



## Method of Application

Dry Time: Temp of 25<sup>o</sup> C: Touch Dry: 1/2 hour, Hard Dry: 1-2 hours Recoat: 1 hour

Air or Airless Spray: Airless tips: .011" - .015

Brush or roll

Conventional applicators

## Recommended Substrate & Primer

STEEL: SEI Corrosion Proof™ Primer or SEI Corrosion Proof Rust Converter

ALUMINUM: SEI Corrosion Proof™ Primer or SEI Corrosion Proof Rust Converter

GALVANIZED: SEI Corrosion Proof™ Primer or SEI Corrosion Proof Rust Converter

## Surface Preparation

Surfaces must be clean, dry and free of contamination such as oils, grease, wax, dirt or any foreign matter. A minimum SSPC SP-3 power tool cleaning is recommended on bare metal.

## Limitations

For mild to moderate exposure. Not recommended for immersion service. Any recoating required should be done within 1 hour, otherwise a minimum of 24 hours and possibly up to as much as 72 hours may be necessary to avoid wrinkling or lifting. Always do a test patch before proceeding to ensure performance.

## Packaging

5-gal pail

55-gal drum

## Disclaimer

The information provided is to be used as a guide and customers should perform their own tests to ensure performance in their application. All data, statements, and recommendations made herein are based upon information we believe to be reliable, but are made without any representation, guarantee or warranty of accuracy. All statements, technical information and recommendations contained herein are based on tests SEI Chemical believes to be reliable, but the accuracy or completeness thereof is not guaranteed. SEI Chemical warrants SEI products will be free from defects when shipped to customer. SEI In Chemical obligation under this warranty shall be limited to replacement of product that proves to be defective. To obtain replacement product under this warranty, the customer must notify SEI Chemical of the claimed defect within six months after shipment of product to customer. All freight charges for replacement products shall be paid by customer. SEI Chemical shall have no liability for any injury, loss or damage arising out of the use of or the inability to use the products. BEFORE USING, USER SHALL DETERMINE THE SUITABILITY OF THE PRODUCT FOR ITS INTENDED USE, AND USER ASSUMES ALL RISK AND LIABILITY WHATSOEVER IN CONNECTION THEREWITH. No representation or recommendation not contained herein shall have any force or effect unless in a written document signed by an officer of SEI Chemical. THE FOREGOING WARRANTY IS EXCLUSIVE AND IN LIEU OF ALL OTHER WARRANTIES, EXPRESS, IMPLIED OR STATUTORY, INCLUDING WITHOUT LIMITATION ANY IMPLIED WARRANTY OF MERCHANTABILITY OR OF FITNESS FOR A PARTICULAR PURPOSE. IN NO CASE SHALL SEI INDUSTRIAL PRODUCTS BE LIABLE FOR INCIDENTAL OR CONSEQUENTIAL DAMAGES. LIMITED WARRANTY, FOR INDUSTRIAL USE ONLY, KEEP OUT OF REACH OF CHILDREN, KEEP CONTAINER TIGHTLY CLOSED, NOT FOR INTERNAL CONSUMPTION, CONSULT MATERIAL SAFETY DATA SHEET FOR MORE INFORMATION.

# SEI Chemical

9005 West Sahara Avenue

Las Vegas, Nevada, 89117

Tel: 800 804 3978 Fax: 800 804 3975

---



## Sei CORROSION PROOF™ PRIMER

### Description

The SEI Corrosion Proof Primer utilizes CPT™ Technology (Corrosion Preventative Technology). This is a highly charged and durable migrational molecule that has the ability to penetrate and travel through a wide variety of mediums in order to find and bond with all types of metal. The CPT molecule needs to fulfill its ionic attraction by bonding with either ferrous or non-ferrous metal. Once the CPT molecule has found metal it creates a highly durable, resilient and robust chemical bond. This bond provides extensive protection for long periods of time in very harsh environments. The Corrosion Proof Primer is an accelerated drying, corrosion inhibitive, non-lifting primer for use on ferrous and non-ferrous metal. This product features excellent adhesion, water resistance and long-term corrosion prevention. This product contains no added lead, chromates or heavy metal compounds. This is an Environmental System. This coating resists sagging with excellent flexibility. SEI Corrosion Proof™ Primer is non-toxic and is easily weldable.

### Recommended Uses & Topcoat

Use on well-cleaned structural steel, beams, posts, tanks, plate stock and iron in any application, which requires corrosion resistance with exceptional adhesion. May be top coated with the Corrosion Proof™ Topcoat, Corrosion Proof Topcoat-EN or the Corrosion Proof™ Offshore Coat.

### Product Data

- Drying Time: 2 Hours maximum
- Finish: Low Sheen
- Colors: Gray
- Non-Volatile Content: 53-58 %
- Recommended Mils Per Coat: Wet: 4.29 - 5.71 mils. Dry: 2.50-2.50 mils
- Salt Spray (ASTM B-117): 880-1100 hr @ 2 mils – In VCI System
- Humidity (ASTM D-1748): 2000+hr. @ 2 mils – In VCI System
- Shelf Life: 12 months
- Theoretical Coverage: 520 sq.ft/gal @ 1 Mil dry film. Actual coverage will be less due to job conditions, type of substrate, loss in container and variations in application efficiencies.

### Application Instructions & Surface Preparation

- Surface must be clean, dry free from oil, grease, rust, chalking pigment, mildew, loose scaling paint or any foreign matter.
- Round off all rough welds and sharp edges. Remove weld splatter and blast particles.
- Degrease and phosphate etch, etc.
- Dry abrasive commercial blast.



# SEI Chemical

2<sup>nd</sup> Floor, 620 8<sup>th</sup> Avenue South West  
Calgary, Alberta, Canada  
T2P 1G4  
Tel: 403 259 5072 Fax: 403 259 0647

---



## Application Conditions

Surface temperature must be 3 °C above the dew point to ensure that moisture condensation does not occur during application and drying period. Apply only when air and surface temperature are between 7 °C and 28 °C.

## Application Equipment

Method of Application: Air or airless spray. Airless tips: .011" - .015"

## Packaging

5-gal pail  
55-gal drum

## Disclaimer

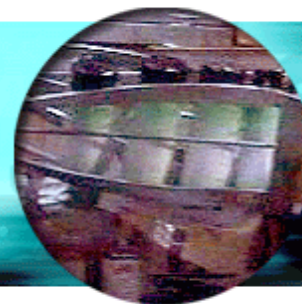
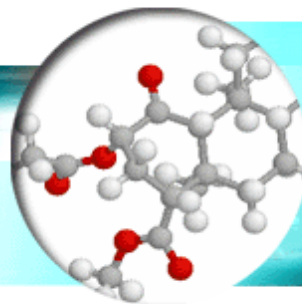
The information provided is to be used as a guide and customers should perform their own tests to ensure performance in their application. All data, statements, and recommendations made herein are based upon information we believe to be reliable, but are made without any representation, guarantee or warranty of accuracy.

All statements, technical information and recommendations contained herein are based on tests SEI Chemical believes to be reliable, but the accuracy or completeness thereof is not guaranteed. SEI Chemical warrants SEI products will be free from defects when shipped to customer. SEI In Chemical obligation under this warranty shall be limited to replacement of product that proves to be defective. To obtain replacement product under this warranty, the customer must notify SEI Chemical of the claimed defect within six months after shipment of product to customer. All freight charges for replacement products shall be paid by customer. SEI Chemical shall have no liability for any injury, loss or damage arising out of the use of or the inability to use the products. BEFORE USING, USER SHALL DETERMINE THE SUITABILITY OF THE PRODUCT FOR ITS INTENDED USE, AND USER ASSUMES ALL RISK AND LIABILITY WHATSOEVER IN CONNECTION THEREWITH. No representation or recommendation not contained herein shall have any force or effect unless in a written document signed by an officer of SEI Chemical. THE FOREGOING WARRANTY IS EXCLUSIVE AND IN LIEU OF ALL OTHER WARRANTIES, EXPRESS, IMPLIED OR STATUTORY, INCLUDING WITHOUT LIMITATION ANY IMPLIED WARRANTY OF MERCHANTABILITY OR OF FITNESS FOR A PARTICULAR PURPOSE. IN NO CASE SHALL SEI INDUSTRIAL PRODUCTS BE LIABLE FOR INCIDENTAL OR CONSEQUENTIAL DAMAGES. LIMITED WARRANTY, FOR INDUSTRIAL USE ONLY, KEEP OUT OF REACH OF CHILDREN, KEEP CONTAINER TIGHTLY CLOSED, NOT FOR INTERNAL CONSUMPTION, CONSULT MATERIAL SAFETY DATA SHEET FOR MORE INFORMATION.

**SEI Corrosion Preventative Technology - CPT™**

[SEI Corrosion Prevention Technology - CPT™](#)  
[Mold Preventative Additive: SEI Mold Resistant Building System - MRBS™](#)  
[Water Proffing Additive - WPAT™](#)

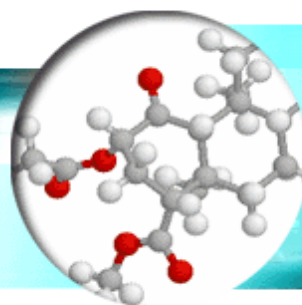
The SEI Corrosion Proof Coat utilizes CPT™ Technology (Corrosion Preventative Technology). This is a highly charged and durable migrational molecule that has the ability to penetrate and travel through a wide variety of mediums in order to find and bond with all types of metal. The CPT molecule needs to fulfill its ionic attraction by bonding with either ferrous or non-ferrous metal. Once the CPT molecule has found metal it creates a highly durable, resilient and robust chemical bond. This bond provides extensive protection for long periods of time in very harsh environments. SEI Corrosion Proof Coat is a brown thixotropic coating. It comes in oil based or solvent-based carriers. The residual film, after solvent evaporation has extreme resistance to salt water and salt spray, making SEI Corrosion Proof Coat particularly useful in marine, industrial, and off-shore corrosion proofing applications. The film dries semi-clear and transparent. SEI Corrosion Proof Coat provides optimal long-term corrosion protection, for ferrous and non-ferrous metals exposed to harsh environments.



**SEI Mold Resistant Building System - MRBS™**

[SEI Corrosion Prevention Technology - CPT™](#)  
[Mold Preventative Additive: SEI Mold Resistant Building System - MRBS™](#)  
[Water Proffing Additive - WPAT™](#)

MRBS is a universal, compatible chemical biocide formulation designed to provide total mold prevention to a wide variety of building materials and coatings. MRBS will enhance your existing products performance by adding total mold prevention that will last over a decade. The incorporation of MRBS to your product will not change or alter any characteristics or attributes of your existing product. This allows corporations to differentiate themselves by selling their building materials or coatings as mold resistant products.



**Tc Technology****Water Proofing Additive - WPAT™**

[SEI Corrosion Prevention Technology - CPT™](#)  
[Mold Preventative Additive: SEI Mold Resistant Building System - MRBS™](#)  
[Water Proofing Additive - WPAT™](#)

SEI Water Proof Additive Technology™ is a universal, compatible chemical formulation designed to provide total water proofing characteristics to existing coatings, sealants and stains. WPAT will enhance your existing coatings performance by adding total water proofing characteristics. This allows corporations to sell their wares based on their products existing performance attributes and now based on their new performance characteristics as 100% water proof coating.

The incorporation of WPAT to your product will not change or alter any characteristics or attributes of your existing product. Paint and sealant manufacturers have utilized WPAT to differentiate themselves in the market place by adding high-end mold preventative performance advantages.

